

NOTE:

1. MATERIAL AND FINISH

1.1. SHELL ASSEMBLY: COPPER ALLOY, OUTER SHELL AND COLLET NUT Cr PLATING, OTHER METALLIC COMPONENTS Ni PLATING

1.2. INSULATOR: PEEK

1.3. CONTACT: COPPER ALLOY, GOLD PLATING

2. RoHS COMPLIANCE

3. CRIMP CONTACT DETAILS SHOWN IN VIEW 1

4. PART NO.

No. OF CONTACTS	øA	L
02,03,04,05,06,07,	0.7	3.0
08,10,14,16	0.5	4.0

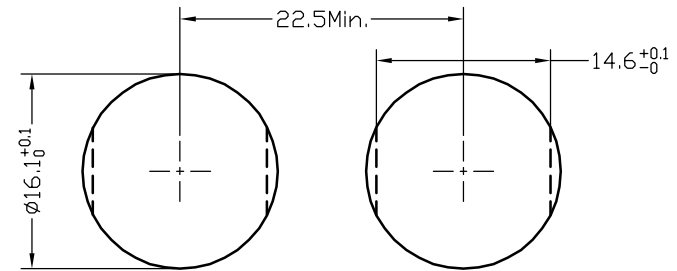
R - F 1 K R * * 0 * 0 0 * 0 0

CONTACT POS.
02-32=2pin-32pin

SHELL MATERIAL
0=Brass

CODE	CONTACT TYPE
2	Male Solder Contact
4	Female Solder Contact
3	Crimp Male Contact
3	Crimp Female Contact
1	Male Print Contact
3	Female Print Contact

CODE	KEY ANGLES
0	0
A	30°
B	60°
..	..

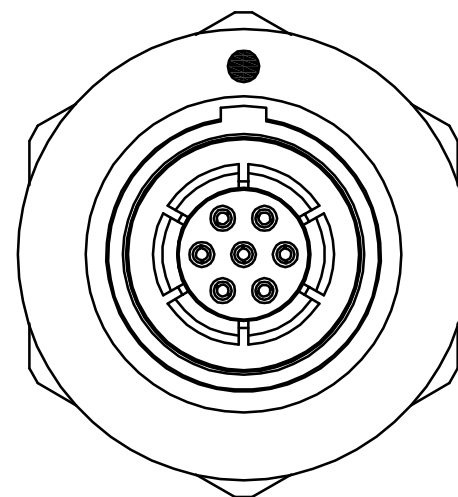
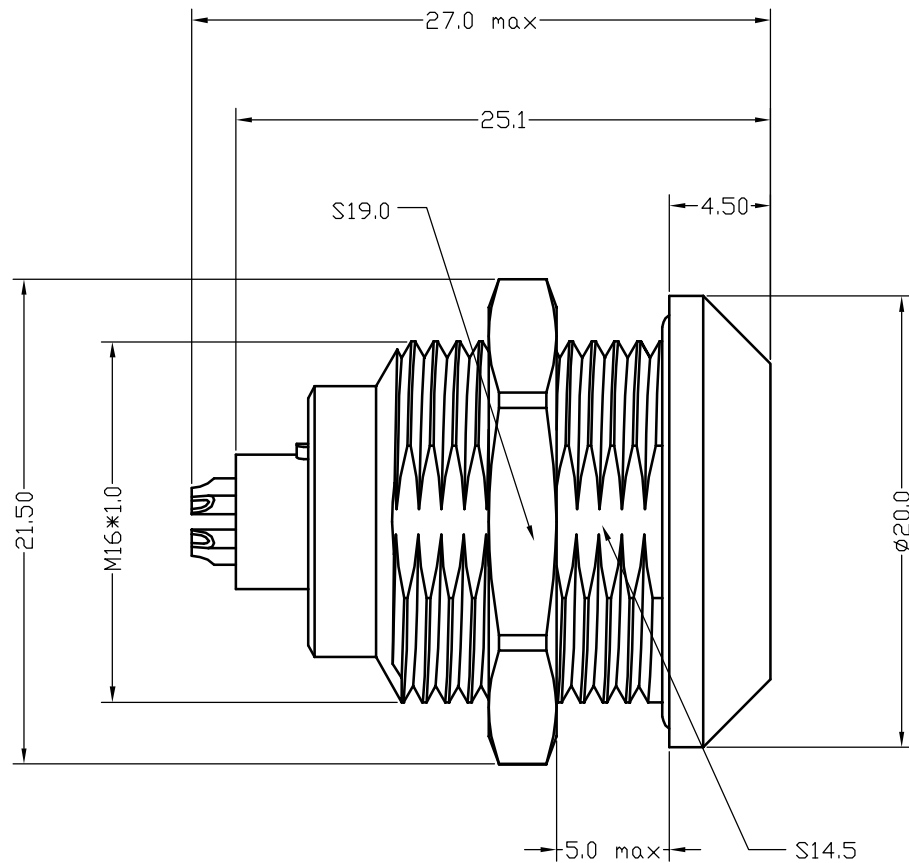


PANEL CUT-OUT

UNITS ■mm □INCH		NAME: SNAP LATCH METAL 1K SOCKET	nexttron NEXTRONICS ENGINEERING CORP.	
GENERAL TOLERANCES: (UNLESS SPECIFIED)		PART NO: R-F1KR**0*00*00	TITLE: CUSTOMER DWG.	
	mm	INCH	APPD: Seawen 4/8/14	DWG NO: 010-0000-B35
4 PLACE	± **	± .**	CHKD: Annie 4/8/14	C
3 PLACE	± 0.10	± .**	DRAWN: Alex 4/8/14	SCALE: SHEET: REV.:
2 PLACE	± 0.30	± .**		2.5/1 1/6 X1
1 PLACE	± 0.50	± .**		
ANGULAR:	X°± 2°	X°± **		

X1	NEW RELEASE	4/8'14	Seawen
REV.	DESCRIPTION	DATE	APPD

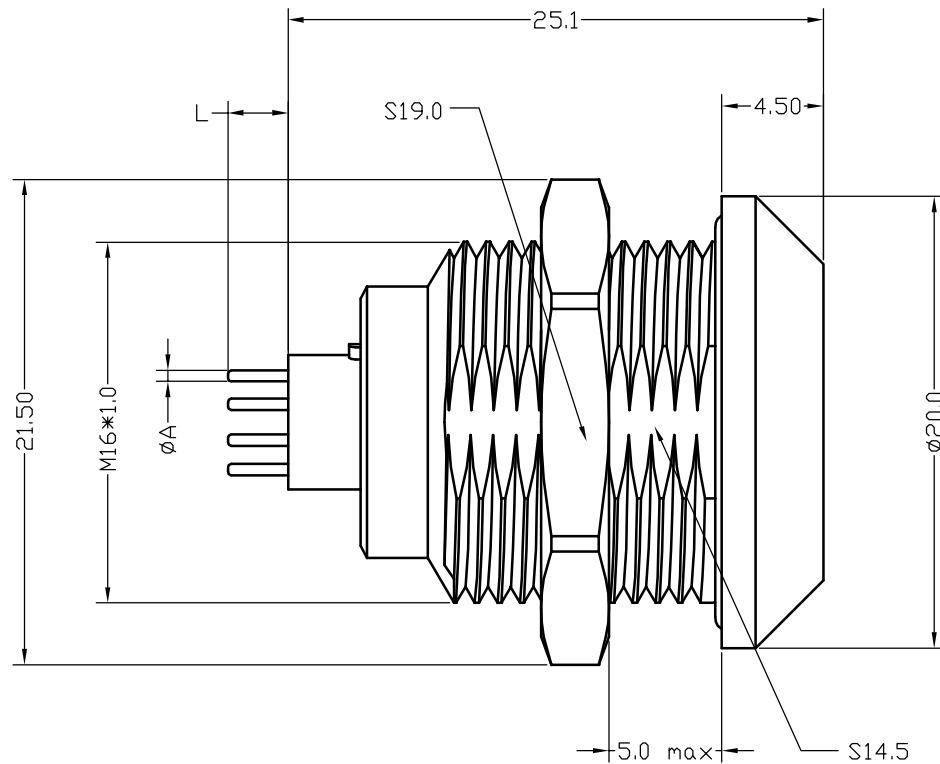
1K FIXED SOCKET SOLDER CONTACT TYPE VIEW



UNITS <input checked="" type="checkbox"/> mm <input type="checkbox"/> INCH		NAME: SNAP LATCH METAL 1K SOCKET		NEXTRONICS ENGINEERING CORP.	
GENERAL TOLERANCES: (UNLESS SPECIFIED)		PART NO: R-F1KR**0*00*00		TITLE: CUSTOMER DWG.	
	mm	INCH	APPD: Seawen 4/8/14		DWG NO: 010-0000-B35
4 PLACE	± **	± **	CHKD: Annie 4/8/14		C
3 PLACE	± 0.10	± **	DRAWN: Alex 4/8/14		
2 PLACE	± 0.30	± **	SCALE:		SHEET: 2/6
1 PLACE	± 0.50	± **	ANGULAR: X° ± 2°		REV.: X1

X1	NEW RELEASE	4/8/14	Seawen
REV.	DESCRIPTION	DATE	APPD

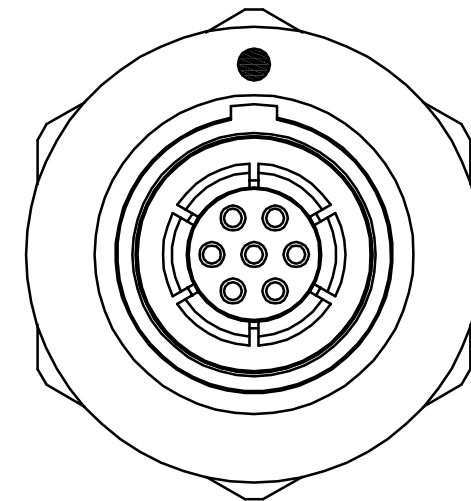
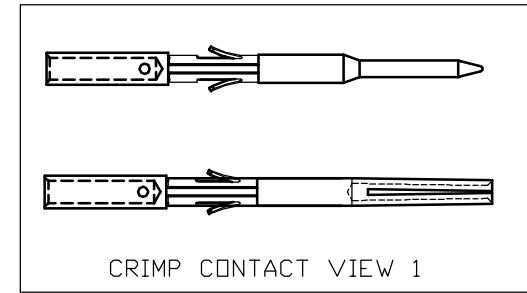
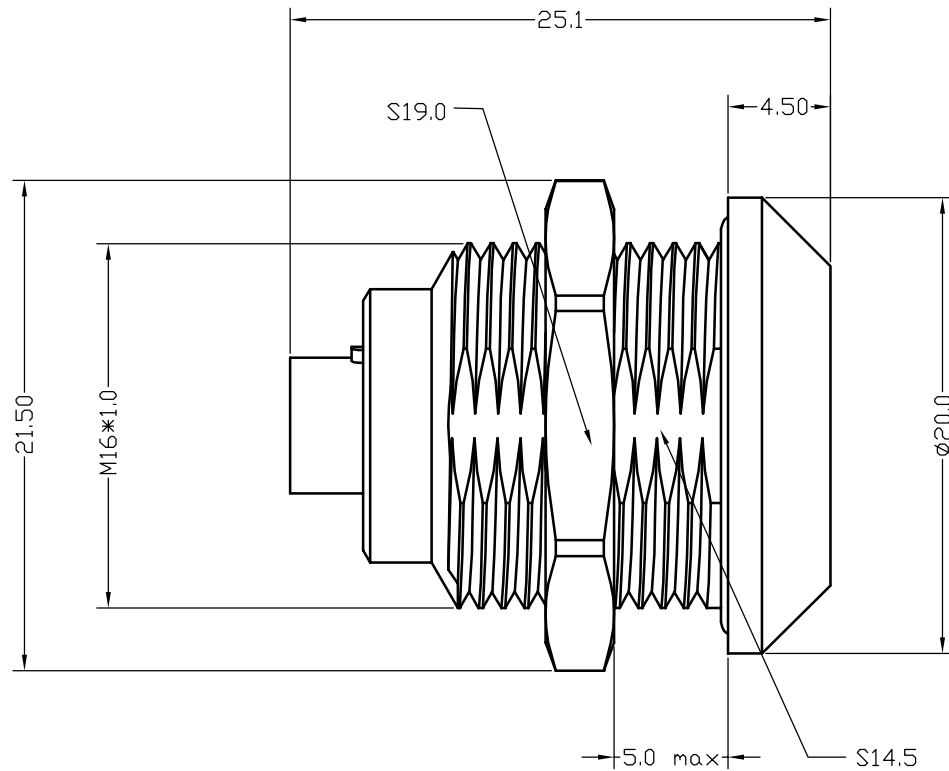
1K FIXED SOCKET PRINT CONTACT TYPE VIEW



UNITS ■mm □INCH		NAME: SNAP LATCH METAL 1K SOCKET		nexttron® NEXTRONICS ENGINEERING CORP.	
GENERAL TOLERANCES: (UNLESS SPECIFIED)		PART NO: R-F1KR**0*00*00		TITLE: CUSTOMER DWG.	
	mm	INCH	APPD: Seawen 4/8/14		DWG NO: 010-0000-B35
4 PLACE	± **.05	± **.002	CHKD: Annie 4/8/14		C
3 PLACE	± 0.10	± **.004	DRAWN: Alex 4/8/14		SCALE: 4/1
2 PLACE	± 0.30	± **.012			SHEET: 3/6
1 PLACE	± 0.50	± **.020			REV.: X1
ANGULAR:	X°± 2°	X°± **.075			

X1	NEW RELEASE	4/8'14	Seawen
REV.	DESCRIPTION	DATE	APPD

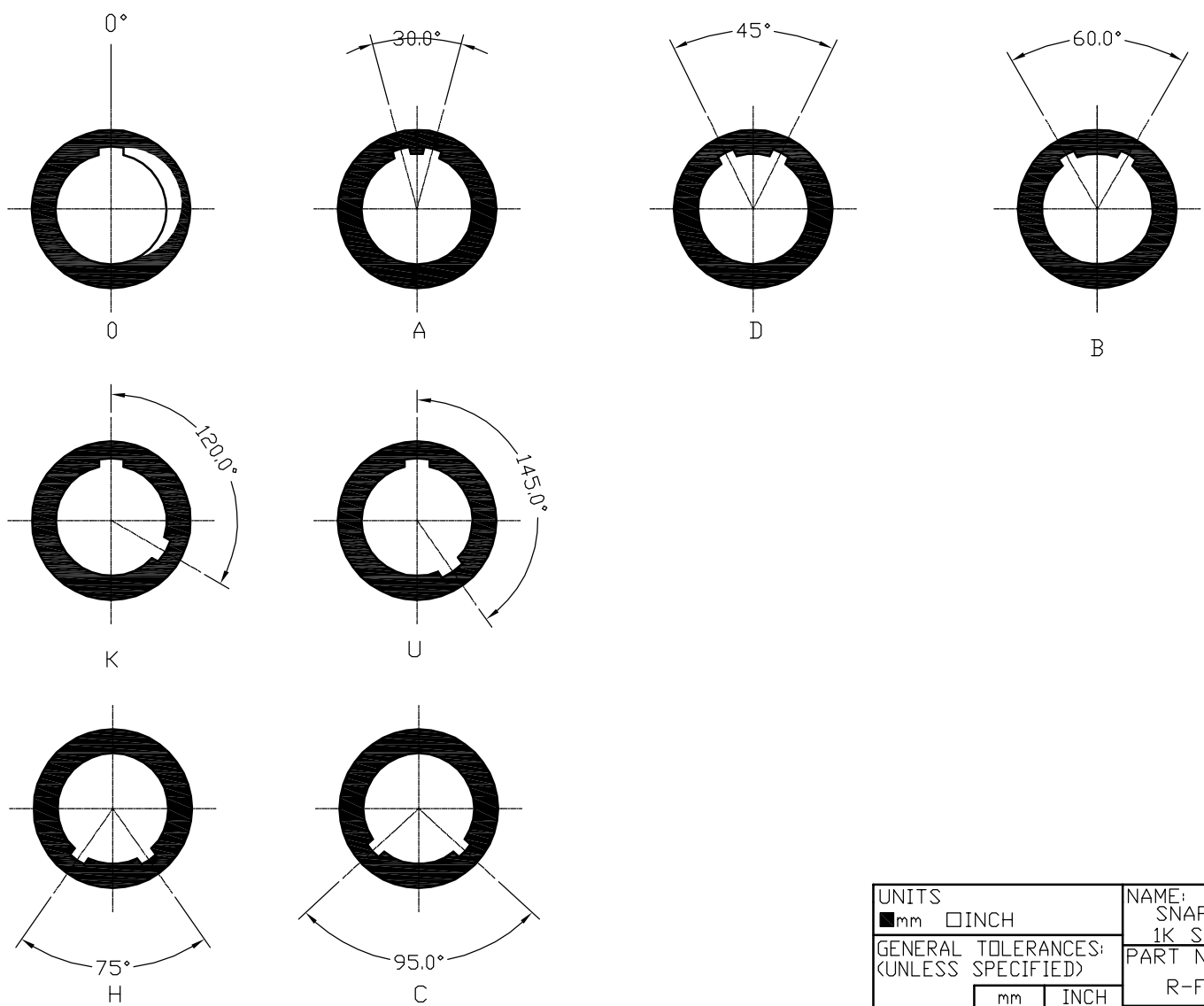
1K FIXED SOCKET CRIMP CONTACT TYPE VIEW



UNITS ■mm □INCH		NAME: SNAP LATCH METAL 1K SOCKET		nexttron® NEXTRONICS ENGINEERING CORP.	
GENERAL TOLERANCES: (UNLESS SPECIFIED)		PART NO: R-F1KR**0*00*00		TITLE: CUSTOMER DWG.	
	mm	INCH	APPD: Seawen 4/8/14	DWG NO: 010-0000-B35	C
4 PLACE	± **.05	± **.002	CHKD: Annie 4/8/14	SCALE: 4/1	SHEET: 4/6
3 PLACE	± 0.10	± **.005	DRAWN: Alex 4/8/14	REV.: X1	
2 PLACE	± 0.30	± **.010			
1 PLACE	± 0.50	± **.015			
ANGULAR:	X° ± 2°	X° ± **.005			

X1	NEW RELEASE	4/8/14	Seawen
REV.	DESCRIPTION	DATE	APPD

KEY ANGLES (RECEPTACLE FRONT VIEW):

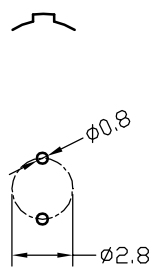


UNITS ■mm □INCH		NAME: SNAP LATCH METAL 1K SOCKET		nexttron NEXTRONICS ENGINEERING CORP.	
GENERAL TOLERANCES: (UNLESS SPECIFIED)		PART NO: R-F1KR**0*00*00		TITLE: CUSTOMER DWG.	
	mm	INCH	APPD: Seawen 4/8/14		DWG NO: 010-0000-B35
4 PLACE	± **.05	± **.002	CHKD: Annie 4/8/14		C
3 PLACE	± 0.10	± **.004	DRAWN: Alex 4/8/14		
2 PLACE	± 0.30	± **.016			
1 PLACE	± 0.50	± **.020			
ANGULAR:	X°± 2°	X°± **.008			

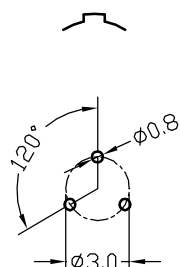
X1	NEW RELEASE	4/8/14	Seawen
REV.	DESCRIPTION	DATE	APPD

PCB DRILLING PATTERN:

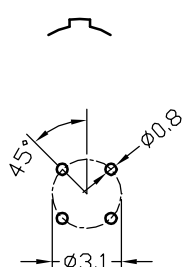
02PIN



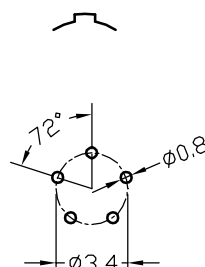
03PIN



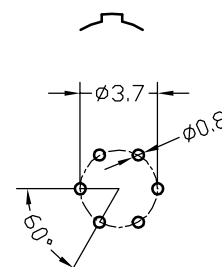
04PIN



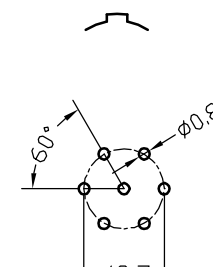
05PIN



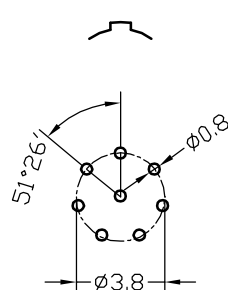
06PIN



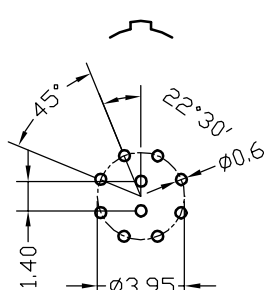
07PIN



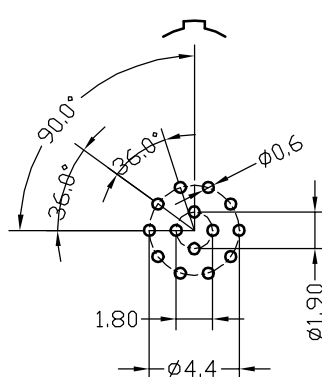
08PIN



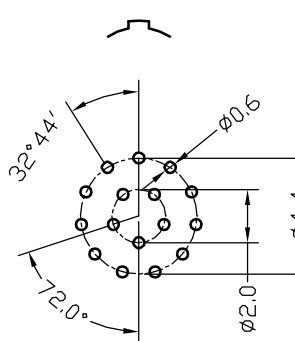
10PIN



14PIN



16PIN



UNITS		NAME:	
■mm □INCH		SNAP LATCH METAL	
GENERAL TOLERANCES:		1K SOCKET	
(UNLESS SPECIFIED)		PART NO:	
	mm	INCH	R-F1KR**0*00*00
4 PLACE	± **.05	± **.002	APPD: Seawen 4/8/14
3 PLACE	± 0.10	± **.004	CHKD: Annie 4/8/14
2 PLACE	± 0.30	± **.015	DRAWN: Alex 4/8/14
1 PLACE	± 0.50	± **.030	
ANGULAR:	X° ± 2°	X° ± **.05	

TITLE:	
CUSTOMER DWG.	
DWG NO:	C
010-0000-B35	
SCALE:	SHEET:
2.5/1	6/6
REV.:	X1

X1	NEW RELEASE	4/8'14	Seawen
REV.	DESCRIPTION	DATE	APPD