

NOTE:

- 1. MATERIAL AND FINISH
  - 1.1. SHELL ASSEMBLY: COPPER ALLOY, OUTER SHELL AND COLLET NUT Cr PLATING, OTHER METALLIC COMPONENTS Ni PLATING
  - 1.2. INSULATOR: PEEK
  - 1.3. CONTACT: COPPER ALLOY, GOLD PLATING
- 2. RoHS COMPLIANCE
- 3 CRIMP CONTACT DETAILS SHOWN IN VIEW 1
- 4. PART NO.

R - F 2 B F \* \* 0 \* D 1 \* \* \*

CONTACT POS.  
02-32=2pin-32pin

SHELL MATERIAL  
0=Brass

CODE	CONTACT TYPE
2	Male Solder Contact
4	Female Solder Contact
3	Crimp Male Contact
3	Crimp Female Contact
1	Male Print Contact
3	Female Print Contact

CABLE OD	
21=OD:	1.4mm-2.2mm
31=OD:	2.2mm-3.2mm
42=OD:	3.2mm-4.2mm
52=OD:	4.2mm-5.2mm
62=OD:	5.2mm-6.2mm
72=OD:	6.2mm-7.2mm
82=OD:	7.2mm-8.2mm
92=OD:	8.2mm-9.2mm
99=OD:	9.2mm-9.9mm

CODE	KEY ANGLES
0	0
A	30°
B	60°
..	..

COLLET NUT  
1=Nut for fitting a bend relief

UNITS	
<input checked="" type="checkbox"/> mm	<input type="checkbox"/> INCH
GENERAL TOLERANCES: (UNLESS SPECIFIED)	
	mm INCH
4 PLACE	± **. ± **.
3 PLACE	± 0.10 ± **.
2 PLACE	± 0.30 ± **.
1 PLACE	± 0.50 ± **.
ANGULAR:	X° ± 2° X° ± **.

NAME: SNAP LATCH METAL 2B FLOATING SOCKET  
PART NO: R-F2BF\*\*0\*D1\*\*\*  
APPD: Seawen 3/24'15  
CHKD: Peter 3/24'15  
DRAWN: Alex 3/24'15

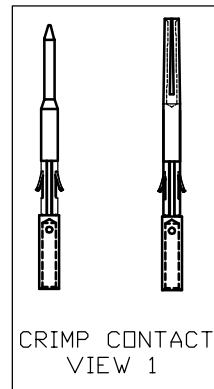
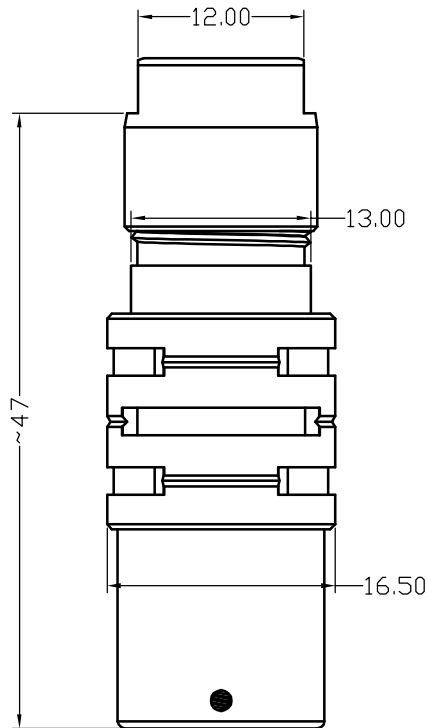
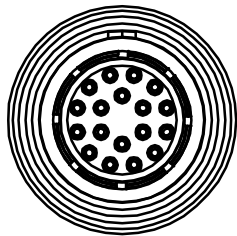
**nextron**  
NEXTRONICS ENGINEERING CORP.

TITLE: CUSTOMER DWG.

DWG NO: 010-0000-B29 C

SCALE: 2.5/1	SHEET: 1/4	REV.: A
--------------	------------	---------

REV.	DESCRIPTION	DATE	APPD
A	ECN-150022	3/24'14	Seawen



NOTE:

- 1. MATERIAL AND FINISH
  - 1.1. SHELL ASSEMBLY: COPPER ALLOY, OUTER SHELL AND COLLET NUT Cr PLATING, OTHER METALLIC COMPONENTS Ni PLATING
  - 1.2. INSULATOR: PEEK
  - 1.3. CONTACT: COPPER ALLOY, GOLD PLATING
- 2. RoHS COMPLIANCE
- ③ CRIMP CONTACT DETAILS SHOWN IN VIEW 1
- 4. PART NO.

R - F 2 B F \* \* 0 \* D 2 \* \* \*

CONTACT POS.  
02-32=2pin-32pin

SHELL MATERIAL  
0=Brass

CODE	CONTACT TYPE
2	Male Solder Contact
4	Female Solder Contact
③ C	Crimp Male Contact
③ M	Crimp Female Contact
1	Male Print Contact
3	Female Print Contact

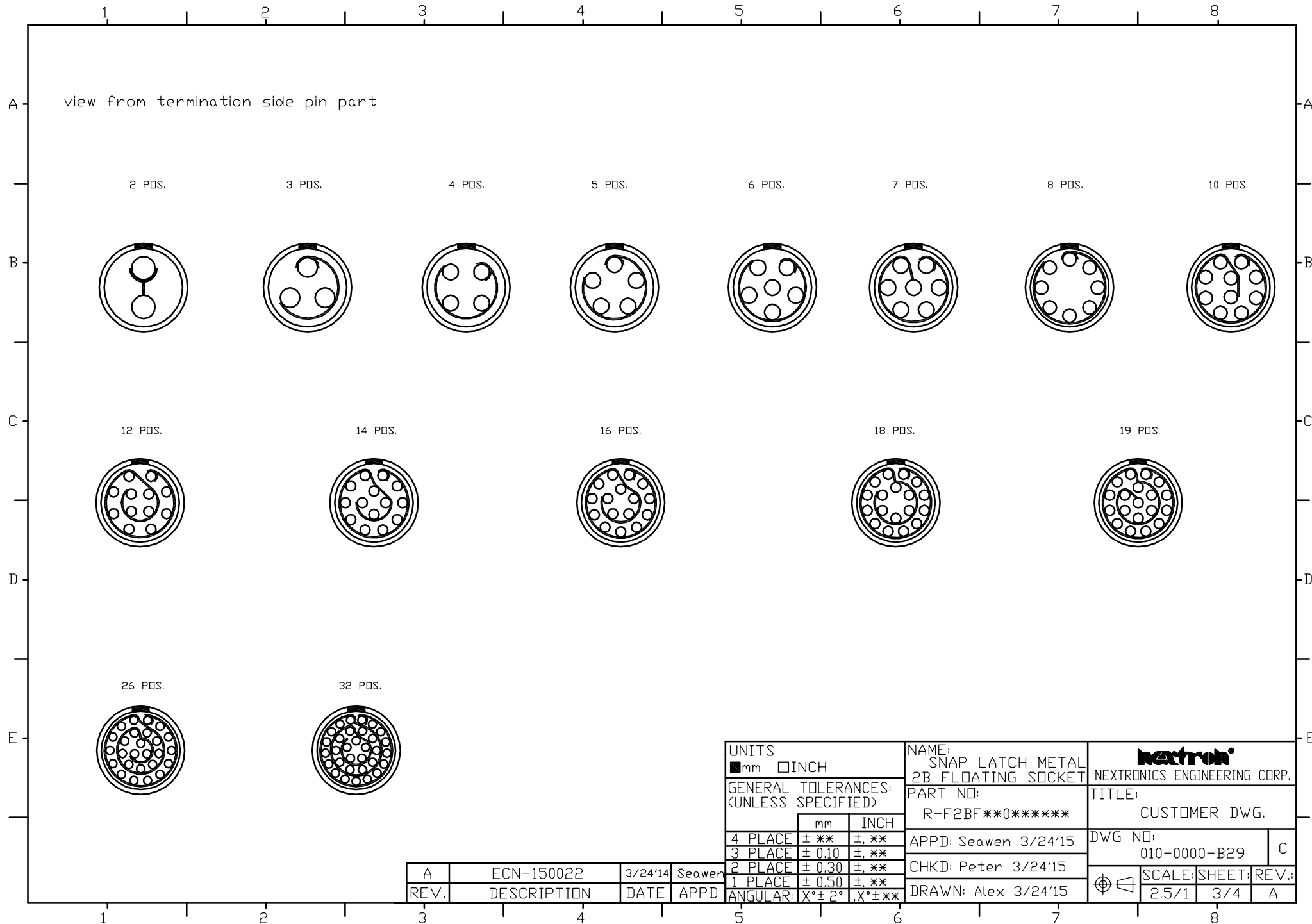
COLLET NUT  
2=Nut for Standard

CABLE OD	
21=OD:	1.4mm-2.2mm
31=OD:	2.2mm-3.2mm
42=OD:	3.2mm-4.2mm
52=OD:	4.2mm-5.2mm
62=OD:	5.2mm-6.2mm
72=OD:	6.2mm-7.2mm
82=OD:	7.2mm-8.2mm
92=OD:	8.2mm-9.2mm
99=OD:	9.2mm-9.9mm

CODE	KEY ANGLES
0	0
A	30°
B	60°
"	"

UNITS ■mm □INCH		NAME: SNAP LATCH METAL 2B FLOATING SOCKET		NEXTRON® NEXTRONICS ENGINEERING CORP.	
GENERAL TOLERANCES: (UNLESS SPECIFIED)		PART NO: R-F2BF**0*D2***		TITLE: CUSTOMER DWG.	
	mm	INCH	APPD: Seawen 3/24'15	DWG NO: 010-0000-B29	C
4 PLACE	± **	± **	CHKD: Peter 3/24'15	SCALE: 2.5/1	SHEET: 2/4
3 PLACE	± 0.10	± **	DRAWN: Alex 3/24'15	REV.: A	
2 PLACE	± 0.30	± **			
1 PLACE	± 0.50	± **			
ANGULAR:	X°± 2°	X°± **			

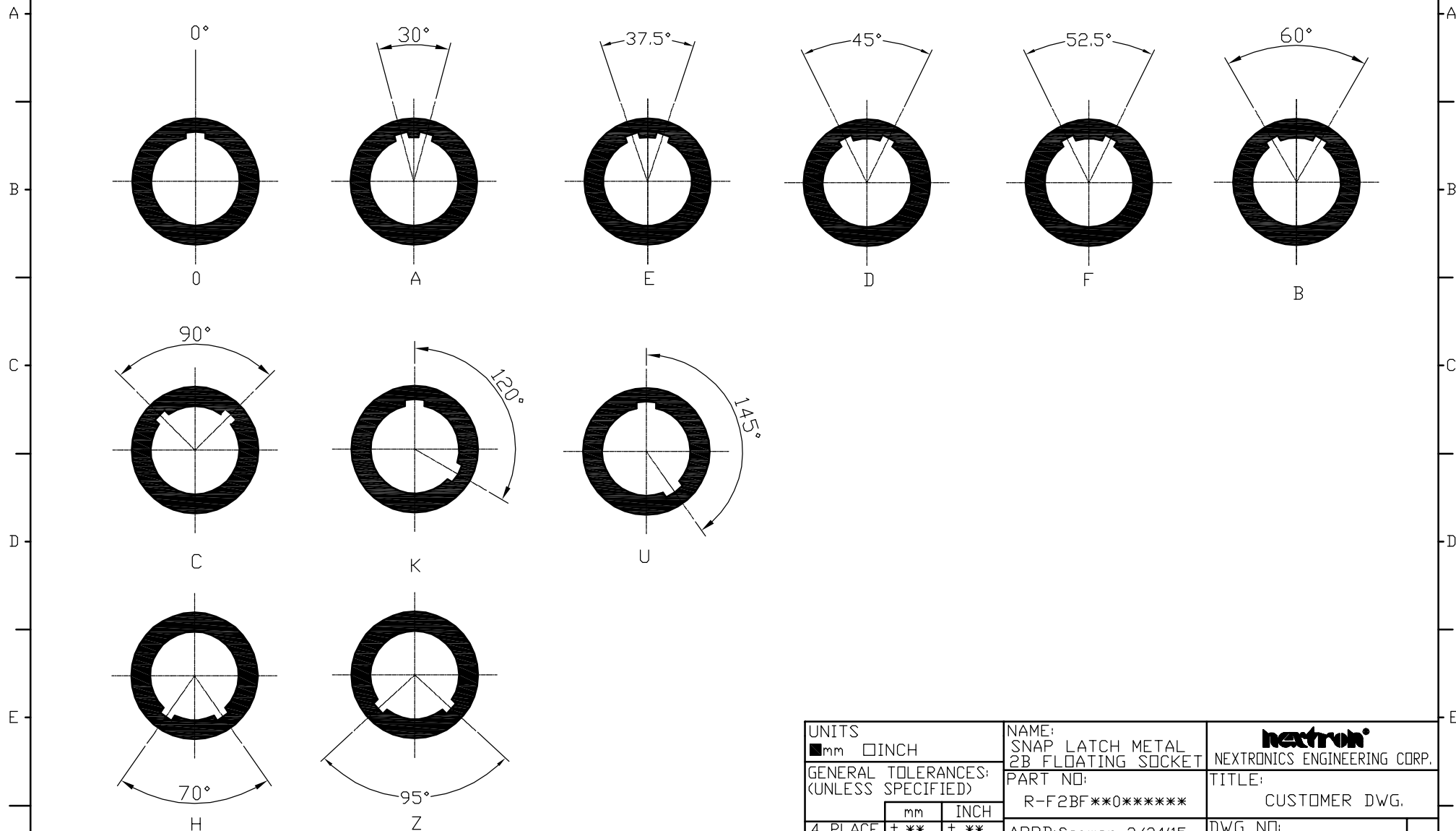
REV.	DESCRIPTION	DATE	APPD
A	ECN-150022	3/24'14	Seawen



A1

D-PRD-034

KEY ANGLES (RECEPTACLE FRONT VIEW):



A	ECN-150022	3/24'14	Seawen
REV.	DESCRIPTION	DATE	APPD

UNITS <input checked="" type="checkbox"/> mm <input type="checkbox"/> INCH		NAME: SNAP LATCH METAL 2B FLOATING SOCKET		NEXTRONICS ENGINEERING CORP.	
GENERAL TOLERANCES: (UNLESS SPECIFIED)		PART NO: R-F2BF**0*****		TITLE: CUSTOMER DWG.	
	mm	INCH	APPD: Seawen 3/24'15		DWG NO: 010-0000-B29
4 PLACE	± **	± **	CHKD: Peter 3/24'15		C
3 PLACE	± 0.10	± **	DRAWN: Alex 3/24'15		SCALE: SHEET: REV.:
2 PLACE	± 0.30	± **			2.5/1 4/4 A
1 PLACE	± 0.50	± **			
ANGULAR:	X° ± 2°	X° ± **			