

NEXTRON PART NUMBER DESCRIPTION

Z-8242410000X1X

LIGHT PIPE OPTION

- 0=WITHOUT LIGHT PIPE
- 1=WITH INNER & OUTER LIGHT PIPE
- 2=WITH INNER LIGHT PIPE
- 3=WITH OUTER LIGHT PIPE

LOGO OPTION

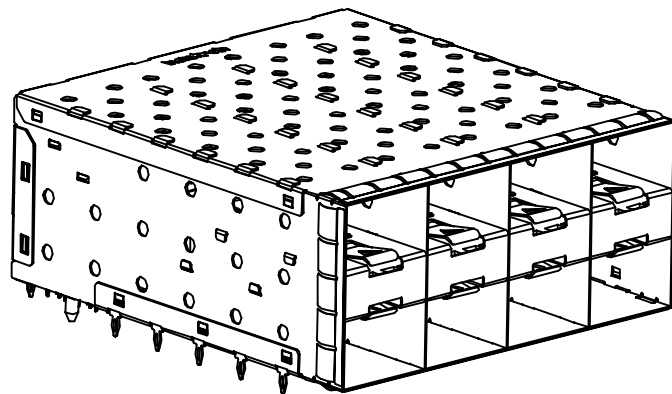
- 0=WITH NEXTRON LOGO
- 1=WITHOUT LOGO

NOTE:

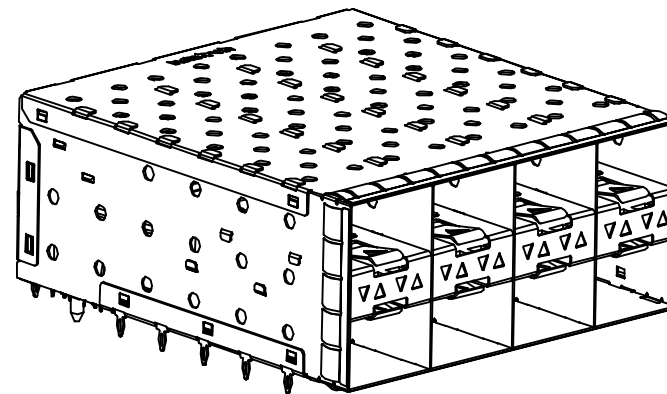
1. MATERIAL:
 CAGE ASSEMBLY: COPPER ALLOY, 0.25mm THICKNESS.
 EMI SPRINGS: COPPER ALLOY, 0.10mm THICKNESS.
 HOUSING: HIGH TEMPERATURE THERMOPLASTIC, UL94V-0, COLOR: BLACK.
 INSERTMOLD: HIGH TEMPERATURE THERMOPLASTIC, UL94V-0, COLOR: BLACK.
 LIGHT PIPE: POLYCARBONATE, CLEAR.
 CONTACT: COPPER ALLOY, 0.20mm THICKNESS.
2. FINISH:
 CONTACT: GOLD PLATED ON CONTACT AREA;
 MATTE TIN PLATED ON TAIL AREA.
 CAGE: NICKEL PLATED.
3. PC BOARD THICKNESS: 1.5mm MIN.
4. THIS PART MEETS THE RESTRICTION OF HAZARDOUS SUBSTANCES IN ELECTRICAL AND ELECTRONIC EQUIPMENT (ROHS) DIRECTIVE (2011/65/EU).

UNITS ■mm □INCH		NAME: SFP+ 2X4 CAGE AND CONNECTOR ASSEMBLY, PRESS FIT, WITH EMI SPRINGS		NEXTRONICS ENGINEERING CORP.	
GENERAL TOLERANCES: (UNLESS SPECIFIED)		PART NO: Z-8242410000X1X		TITLE: CUSTOMER DWG.	
	mm	INCH	APPD: 楊海文 07/01'14	DWG NO: 010-0000-A03	
4 PLACE	± **	±. **	CHKD: 楊海文 07/01'14	C	
3 PLACE	± 0.10	±. **	DRAWN: 廖小瓊 07/01'14	SCALE: SHEET: REV.:	
2 PLACE	± 0.20	±. **		3/2	1/4
1 PLACE	± 0.25	±. **			
ANGULAR:	X° ± 1°	X° ± **			

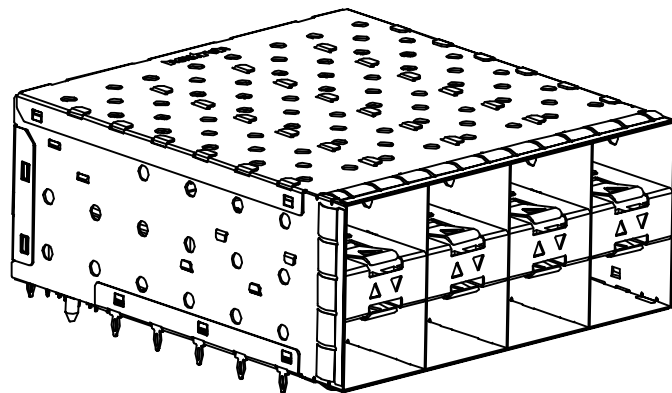
B	ECN-130255	07/01'14	楊海文
REV.	DESCRIPTION	DATE	APPD



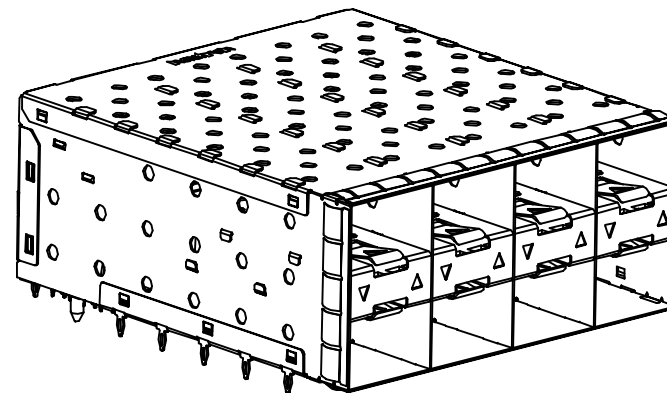
Z-824241000001X AS SHOWN
WITHOUT LIGHT PIPE



Z-824241000011X AS SHOWN
WITH INNER & OUTER LIGHT PIPES



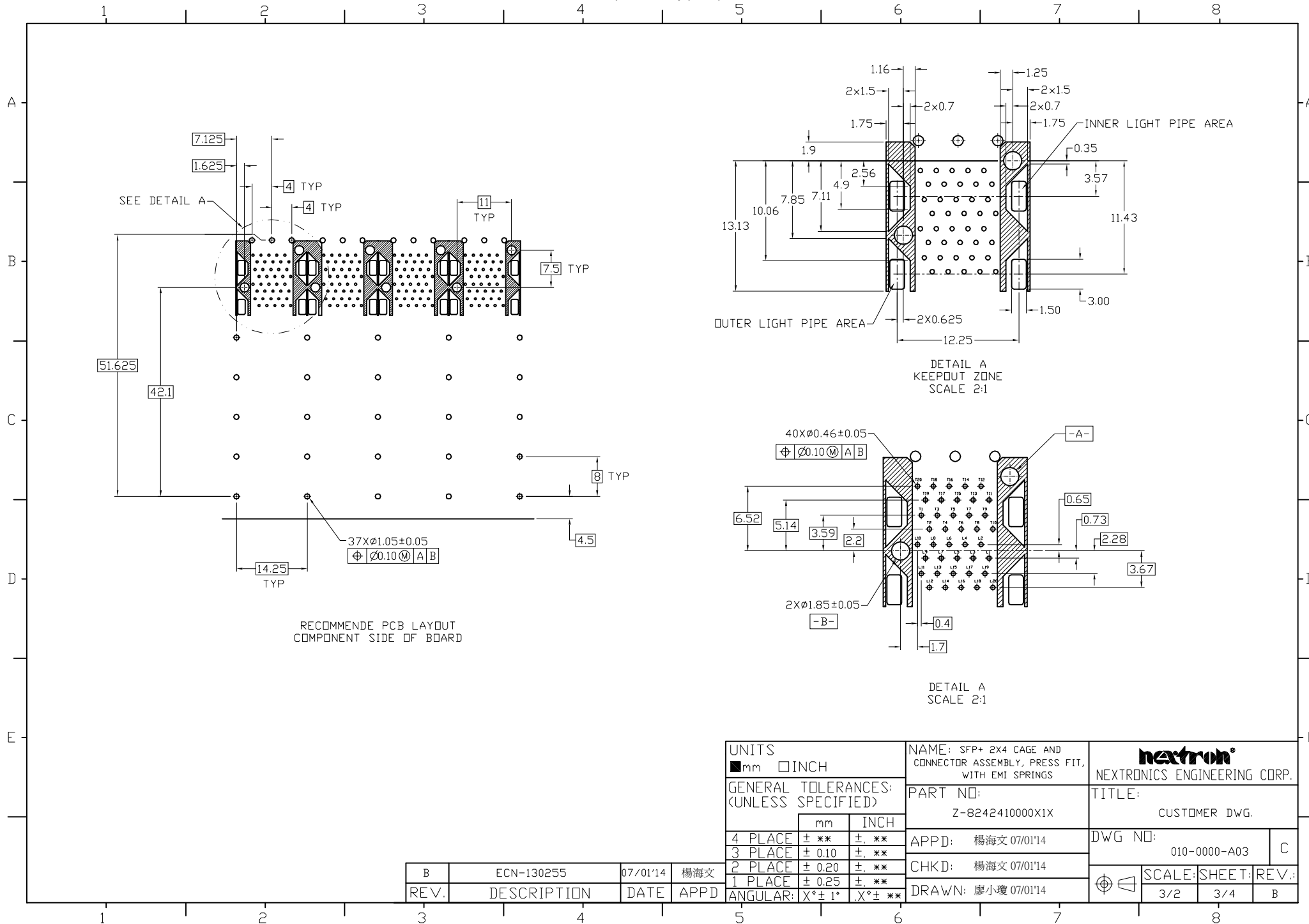
Z-824241000021X AS SHOWN
WITH INNER LIGHT PIPES



Z-824241000031X AS SHOWN
WITH OUTER LIGHT PIPES

UNITS ■ mm □ INCH		NAME: SFP+ 2X4 CAGE AND CONNECTOR ASSEMBLY, PRESS FIT, WITH EMI SPRINGS		nexttron NEXTRONICS ENGINEERING CORP.	
GENERAL TOLERANCES: (UNLESS SPECIFIED)		PART NO: Z-8242410000X1X		TITLE: CUSTOMER DWG.	
	mm	INCH	APPD: 楊海文 07/01'14	DWG NO: 010-0000-A03	
4 PLACE	± **.05	± **.002	CHKD: 楊海文 07/01'14	C	
3 PLACE	± 0.10	± **.005	DRAWN: 廖小瓊 07/01'14	SCALE: SHEET: REV.:	
2 PLACE	± 0.20	± **.010		3/2	2/4
1 PLACE	± 0.25	± **.015			B
ANGULAR:	X° ± 1°	X° ± **.05			

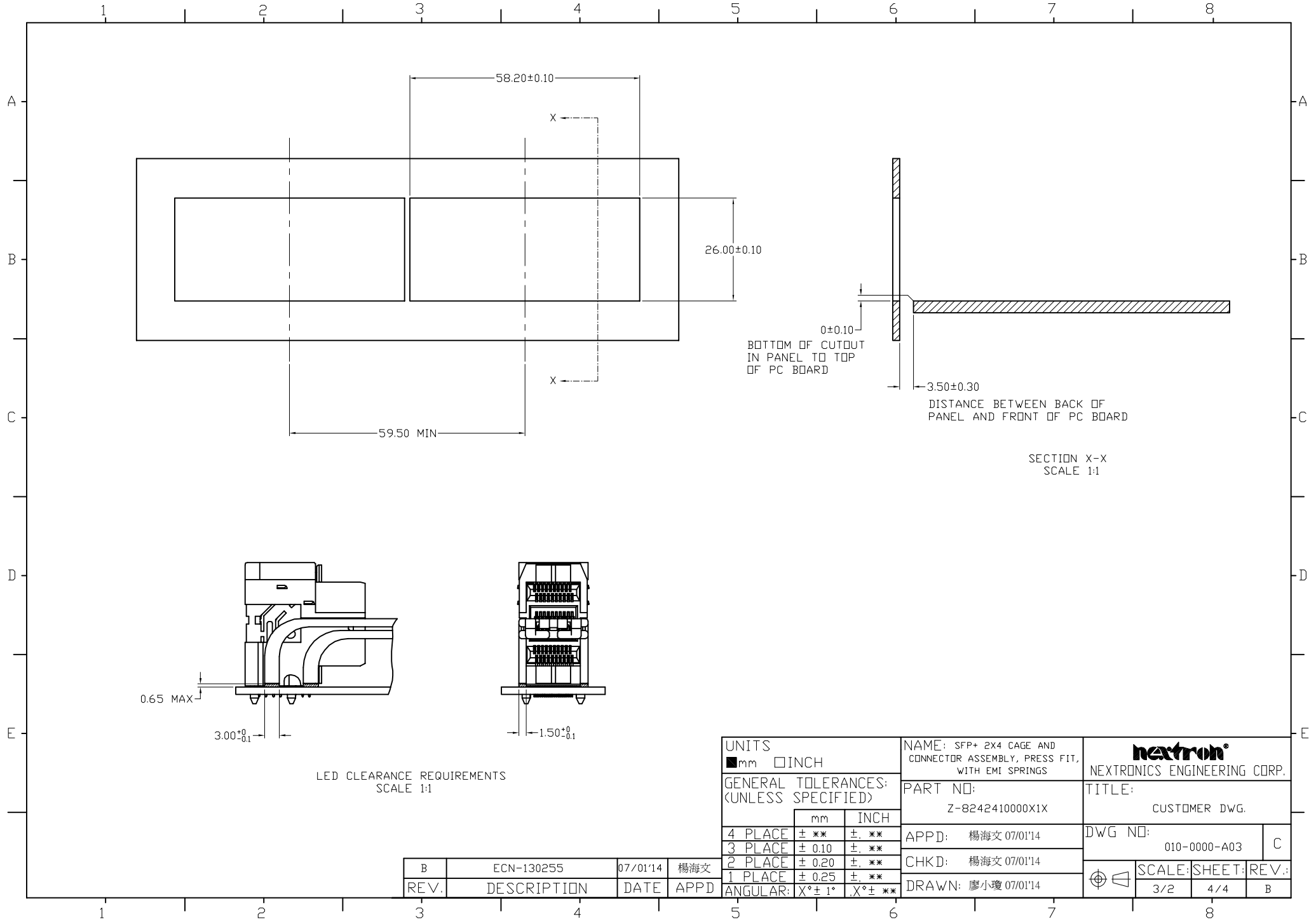
B	ECN-130255	07/01'14	楊海文
REV.	DESCRIPTION	DATE	APPD



UNITS ■mm □INCH		NAME: SFP+ 2X4 CAGE AND CONNECTOR ASSEMBLY, PRESS FIT, WITH EMI SPRINGS		nexttron® NEXTRONICS ENGINEERING CORP.	
GENERAL TOLERANCES: (UNLESS SPECIFIED)		PART NO: Z-8242410000X1X		TITLE: CUSTOMER DWG.	
		mm	INCH	APPD: 楊海文 07/01'14	DWG NO: 010-0000-A03
4 PLACE	± **	± .**		CHKD: 楊海文 07/01'14	C
3 PLACE	± 0.10	± .**		DRAWN: 廖小瓊 07/01'14	
2 PLACE	± 0.20	± .**			
1 PLACE	± 0.25	± .**			
ANGULAR:	X° ± 1°	X° ± **			
REV.	DESCRIPTION	DATE	APPD	SCALE: 3/2	SHEET: 3/4
B	ECN-130255	07/01'14	楊海文	REV.: B	

A1

D-PRD-034



UNITS <input checked="" type="checkbox"/> mm <input type="checkbox"/> INCH		NAME: SFP+ 2X4 CAGE AND CONNECTOR ASSEMBLY, PRESS FIT, WITH EMI SPRINGS		nexttron NEXTRONICS ENGINEERING CORP.	
GENERAL TOLERANCES: (UNLESS SPECIFIED)		PART NO: Z-8242410000X1X		TITLE: CUSTOMER DWG.	
	mm	INCH	APPD: 楊海文 07/01'14		DWG NO: 010-0000-A03
4 PLACE	± **	±. **	CHKD: 楊海文 07/01'14		C
3 PLACE	± 0.10	±. **	DRAWN: 廖小瓊 07/01'14		
2 PLACE	± 0.20	±. **	SCALE: <input checked="" type="checkbox"/> 3/2 <input type="checkbox"/> 4/4		REV.:
1 PLACE	± 0.25	±. **			B
ANGULAR:	X° ± 1°	X° ± **			

B	ECN-130255	07/01'14	楊海文
REV.	DESCRIPTION	DATE	APPD