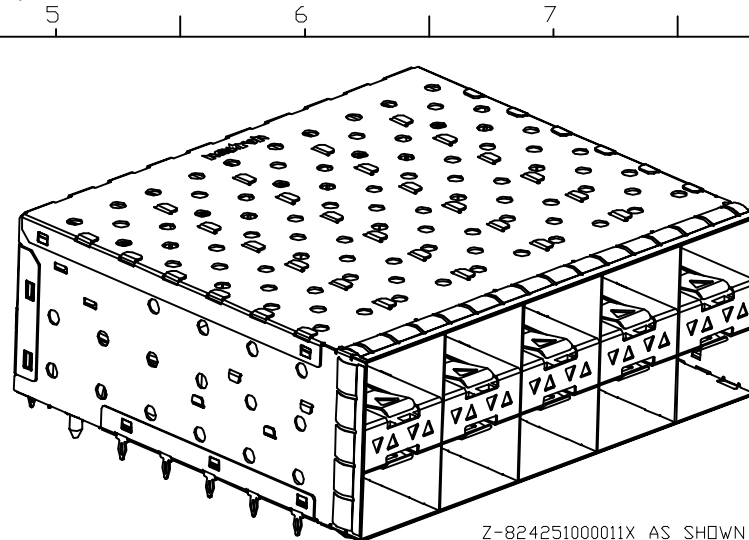
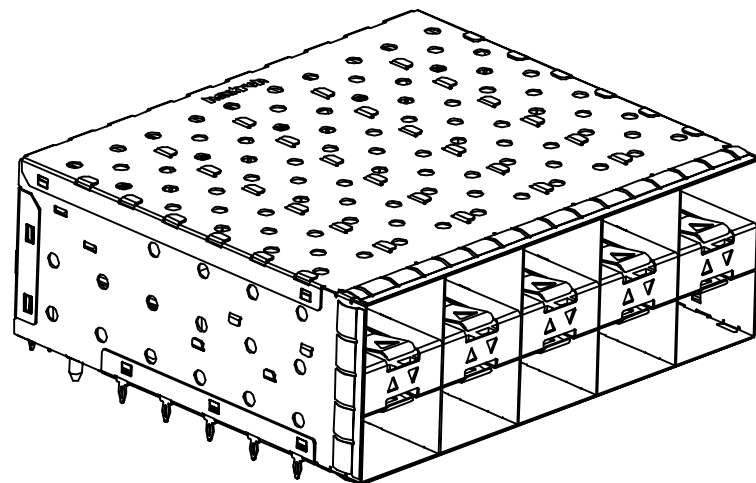


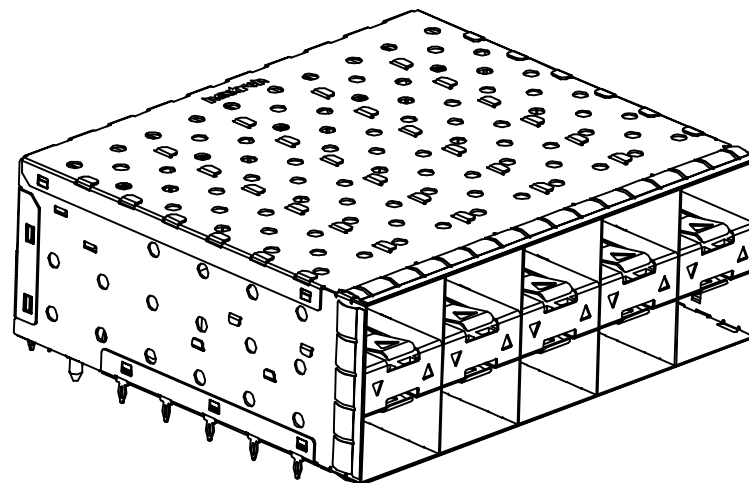
Z-824251000001X AS SHOWN  
WITHOUT LIGHT PIPE



Z-824251000011X AS SHOWN  
WITH INNER & OUTER LIGHT PIPES



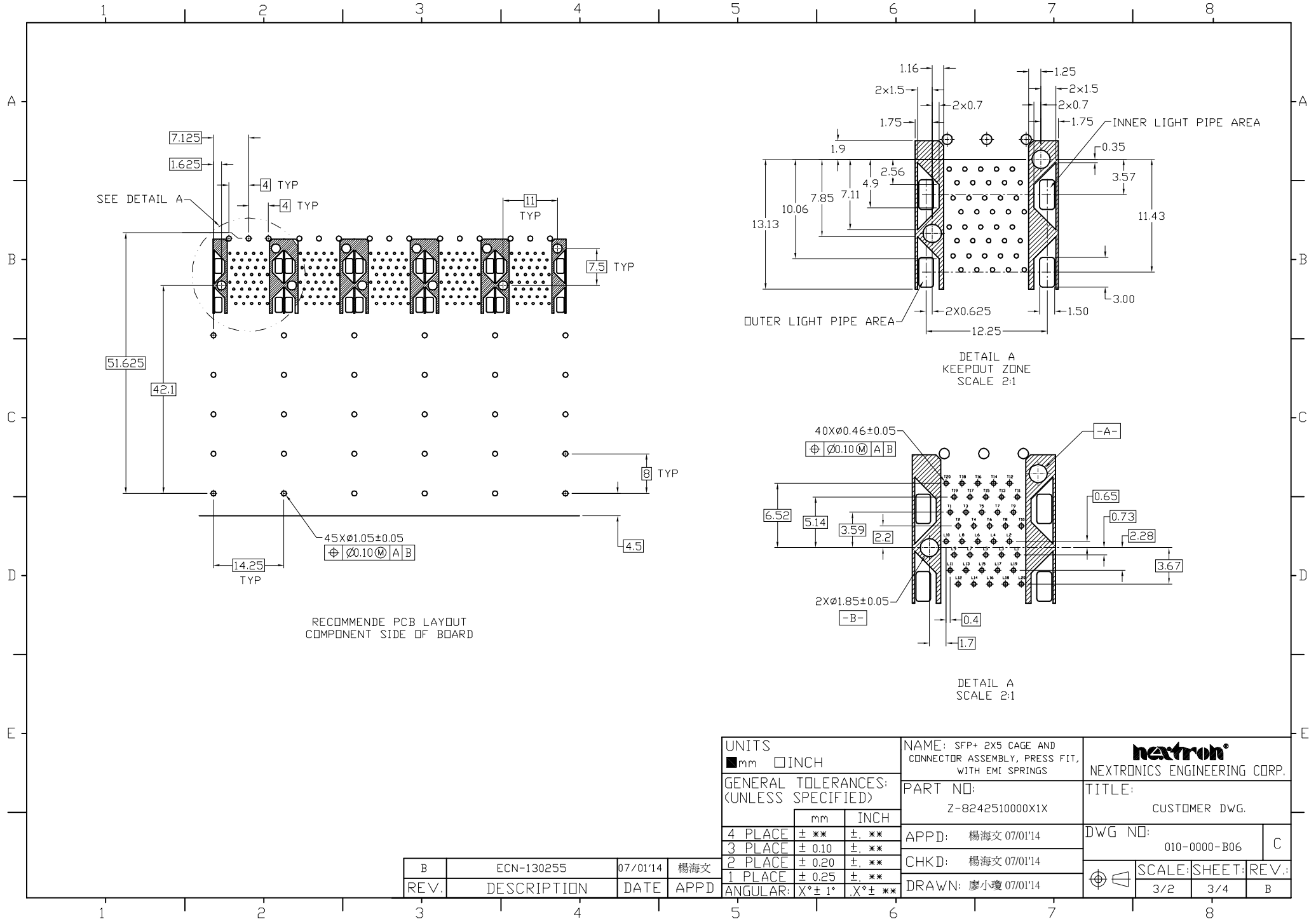
Z-824251000021X AS SHOWN  
WITH INNER LIGHT PIPES



Z-824251000031X AS SHOWN  
WITH OUTER LIGHT PIPES

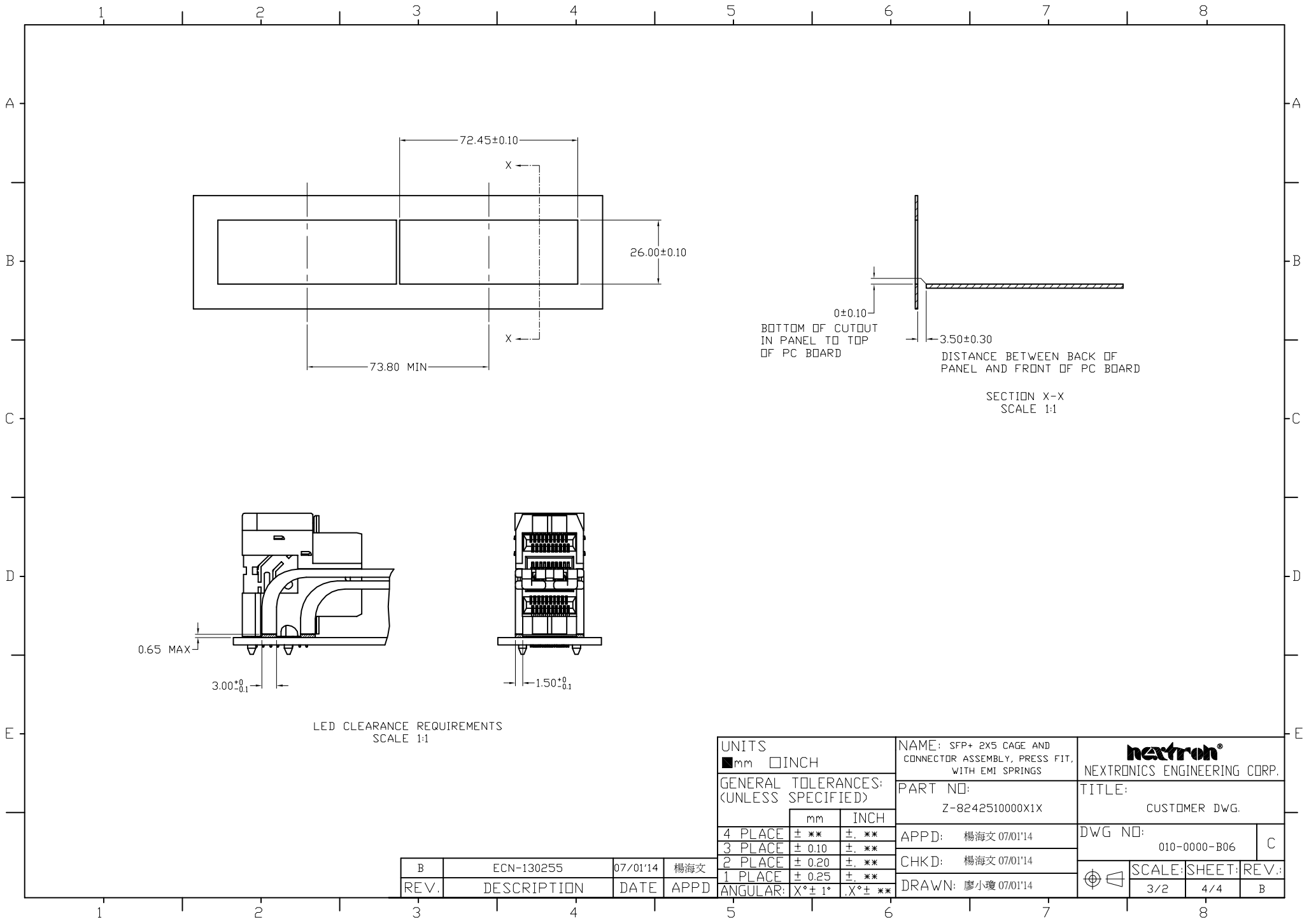
UNITS <input checked="" type="checkbox"/> mm <input type="checkbox"/> INCH		NAME: SFP+ 2X5 CAGE AND CONNECTOR ASSEMBLY, PRESS FIT, WITH EMI SPRINGS		 NEXTRONICS ENGINEERING CORP.	
GENERAL TOLERANCES: (UNLESS SPECIFIED)		PART NO: Z-8242510000X1X		TITLE: CUSTOMER DWG.	
	mm	INCH	APPD: 楊海文 07/01'14		DWG NO: 010-0000-B06
4 PLACE	± **.05	± **.002	CHKD: 楊海文 07/01'14		C
3 PLACE	± 0.10	± **.004	DRAWN: 廖小瓊 07/01'14		
2 PLACE	± 0.20	± **.008			
1 PLACE	± 0.25	± **.010			
ANGULAR:	X° ± 1°	X° ± **.05			SCALE: SHEET: REV.: 3/2 2/4 B

B	ECN-130255	07/01'14	楊海文
REV.	DESCRIPTION	DATE	APPD



RECOMMENDE PCB LAYOUT  
COMPONENT SIDE OF BOARD

UNITS ■mm □INCH		NAME: SFP+ 2X5 CAGE AND CONNECTOR ASSEMBLY, PRESS FIT, WITH EMI SPRINGS		 NEXTRONICS ENGINEERING CORP.	
GENERAL TOLERANCES: (UNLESS SPECIFIED)		PART NO: Z-8242510000X1X			
		mm	INCH	APPD: 楊海文 07/01'14	DWG NO: 010-0000-B06
4 PLACE	± **	± .**		CHKD: 楊海文 07/01'14	C
3 PLACE	± 0.10	± .**		DRAWN: 廖小瓊 07/01'14	
2 PLACE	± 0.20	± .**			
1 PLACE	± 0.25	± .**			
ANGULAR:	X° ± 1°	X° ± **			
REV.	DESCRIPTION	DATE	APPD	SCALE: 3/2	SHEET: 3/4
B	ECN-130255	07/01'14	楊海文	REV.: B	



UNITS		NAME: SFP+ 2X5 CAGE AND CONNECTOR ASSEMBLY, PRESS FIT, WITH EMI SPRINGS	
mm	INCH	PART NO: Z-8242510000X1X	
GENERAL TOLERANCES: (UNLESS SPECIFIED)			
	mm	INCH	
4 PLACE	± **	±. **	
3 PLACE	± 0.10	±. **	
2 PLACE	± 0.20	±. **	
1 PLACE	± 0.25	±. **	
ANGULAR:	X° ± 1°	.X° ± **	

TITLE: CUSTOMER DWG.	
APPD: 楊海文 07/01'14	DWG NO: 010-0000-B06
CHKD: 楊海文 07/01'14	SCALE: 3/2
DRAWN: 廖小瓊 07/01'14	SHEET: 4/4

nexttron® NEXTRONICS ENGINEERING CORP.		
TITLE: CUSTOMER DWG.		
DWG NO: 010-0000-B06	C	
SCALE: 3/2	SHEET: 4/4	REV.: B

B	ECN-130255	07/01'14	楊海文
REV.	DESCRIPTION	DATE	APPD