

NEXTRON PART NUMBER DESCRIPTION

Z-8242510000X2X

LIGHT PIPE OPTION

- 0=WITHOUT LIGHT PIPE
- 1=WITH INNER & OUTER LIGHT PIPE
- 2=WITH INNER LIGHT PIPE
- 3=WITH OUTER LIGHT PIPE

LOGO OPTION

- 0=WITH NEXTRON LOGO
- 1=WITHOUT LOGO

NOTE:

1. MATERIAL:
 CAGE ASSEMBLY: COPPER ALLOY, 0.25mm THICKNESS.
 BRACKET: COPPER ALLOY, 0.25mm THICKNESS.
 HOUSING: HIGH TEMPERATURE THERMOPLASTIC, UL94V-0, COLOR: BLACK.
 INSERTMOLD: HIGH TEMPERATURE THERMOPLASTIC, UL94V-0, COLOR: BLACK.
 LIGHT PIPE: POLYCARBONATE, CLEAR.
 CONTACT: COPPER ALLOY, 0.20mm THICKNESS.
 EMI GASKET: CONDUCTIVE ELASTOMER.
2. FINISH:
 CONTACT: GOLD PLATED ON CONTACT AREA;
 MATTE TIN PLATED ON TAIL AREA.
 CAGE: NICKEL PLATED.
3. PC BOARD THICKNESS: 1.5mm MIN.
4. THIS PART MEETS THE RESTRICTION OF HAZARDOUS SUBSTANCES IN ELECTRICAL AND ELECTRONIC EQUIPMENT (ROHS) DIRECTIVE (2011/65/EU).

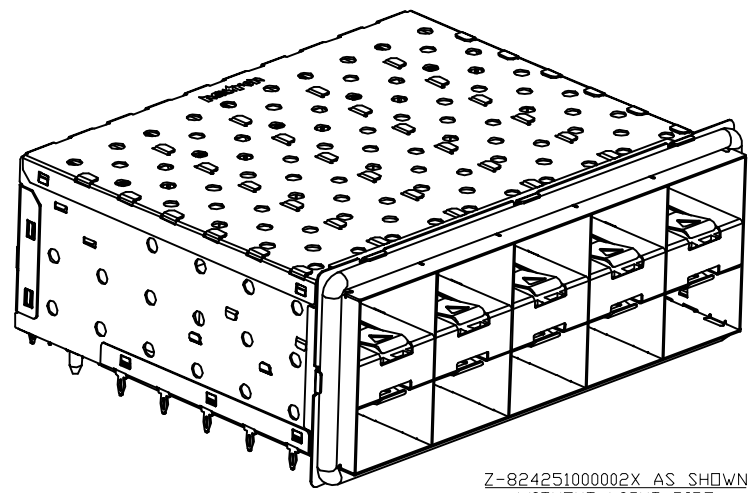
UNITS <input checked="" type="checkbox"/> mm <input type="checkbox"/> INCH		NAME: SFP+ 2X5 CAGE AND CONNECTOR ASSEMBLY, PRESS FIT, WITH EMI GASKET		nextron NEXTRONICS ENGINEERING CORP.	
GENERAL TOLERANCES: (UNLESS SPECIFIED)		PART NO: Z-8242510000X2X		TITLE: CUSTOMER DWG.	
	mm	INCH	APPD: 楊海文 07/01'14		DWG NO: 010-0000-B08
4 PLACE	± **	± **	CHKD: 楊海文 07/01'14		C
3 PLACE	± 0.10	± **	DRAWN: 廖小瓊 07/01'14		
2 PLACE	± 0.20	± **	SCALE: SHEET: REV.: 3/2 1/4 B		
1 PLACE	± 0.25	± **			
ANGULAR:	X° ± 1°	X° ± **			

B	ECN-130255	07/01'14	楊海文
REV.	DESCRIPTION	DATE	APPD

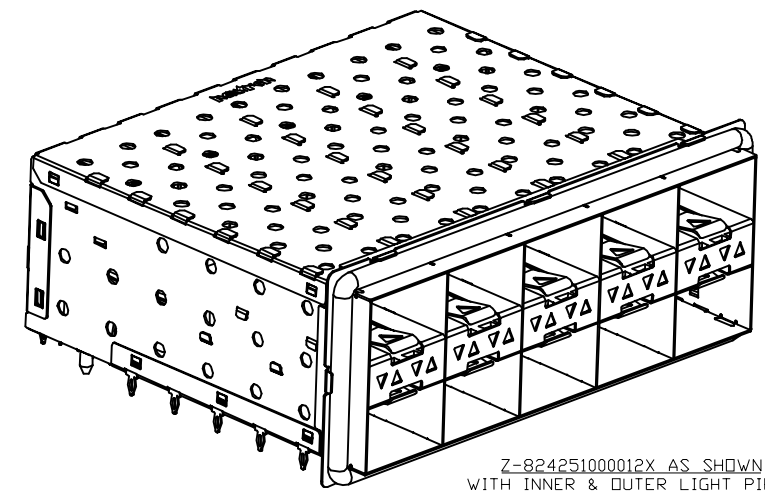
1 2 3 4 5 6 7 8

A
B
C
D
E

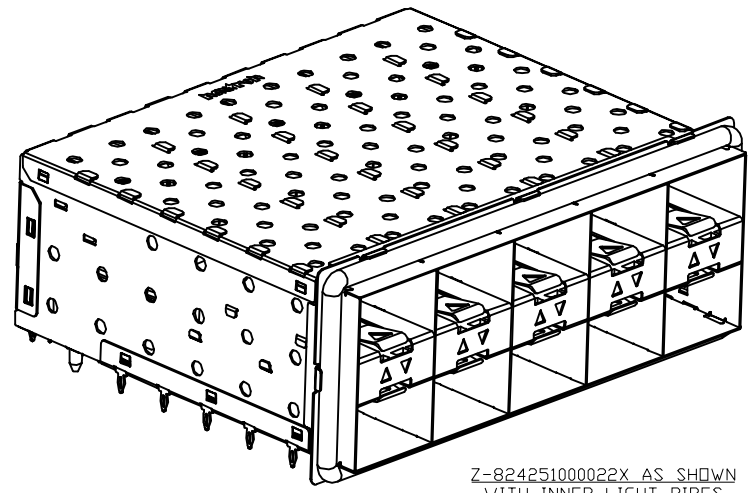
A
B
C
D
E



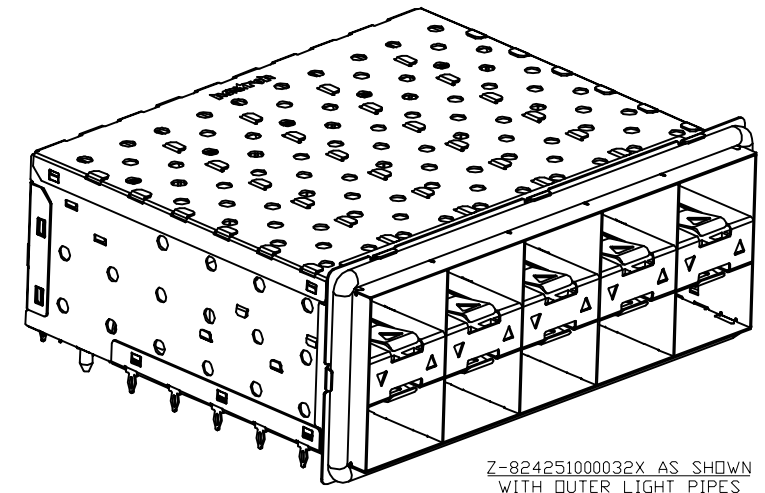
Z-824251000002X AS SHOWN
WITHOUT LIGHT PIPE



Z-824251000012X AS SHOWN
WITH INNER & OUTER LIGHT PIPES



Z-824251000022X AS SHOWN
WITH INNER LIGHT PIPES



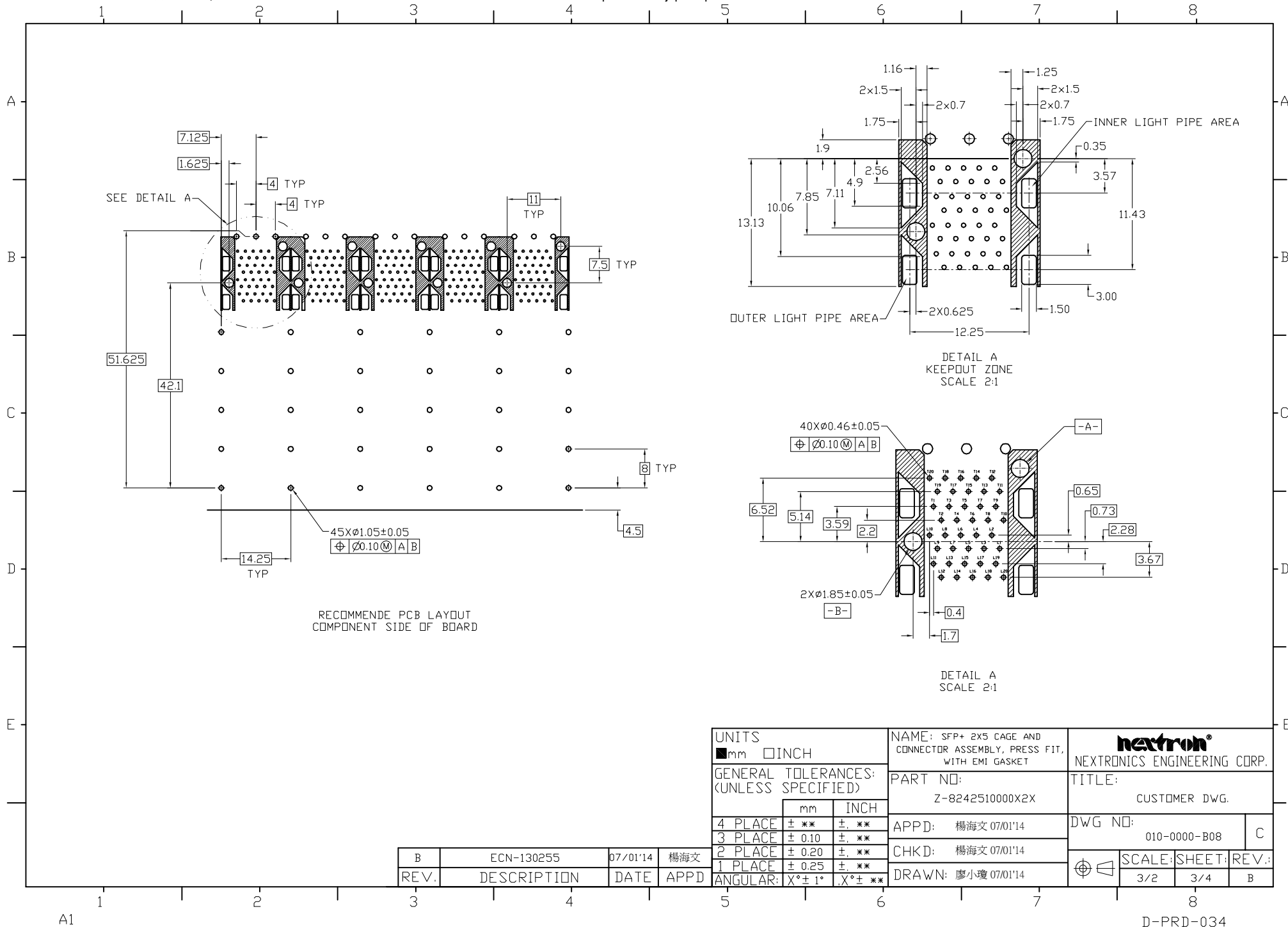
Z-824251000032X AS SHOWN
WITH OUTER LIGHT PIPES

UNITS <input checked="" type="checkbox"/> mm <input type="checkbox"/> INCH		NAME: SFP+ 2X6 CAGE AND CONNECTOR ASSEMBLY, PRESS FIT, WITH EMI GASKET		 NEXTRONICS ENGINEERING CORP.	
GENERAL TOLERANCES: (UNLESS SPECIFIED)		PART NO: Z-8242510000X2X		TITLE: CUSTOMER DWG.	
	mm	INCH	APPD: 楊海文 07/01'14		DWG NO: 010-0000-B08
4 PLACE	± **.05	± **.002	CHKD: 楊海文 07/01'14		C
3 PLACE	± 0.10	± **.005	DRAWN: 廖小瓊 07/01'14		
2 PLACE	± 0.20	± **.010	SCALE: 3/2		SHEET: 2/4
1 PLACE	± 0.25	± **.015	REV.:		B
ANGULAR:	X° ± 1°	X° ± **.05			

B	ECN-130255	07/01'14	楊海文
REV.	DESCRIPTION	DATE	APPD

A1

D-PRD-034



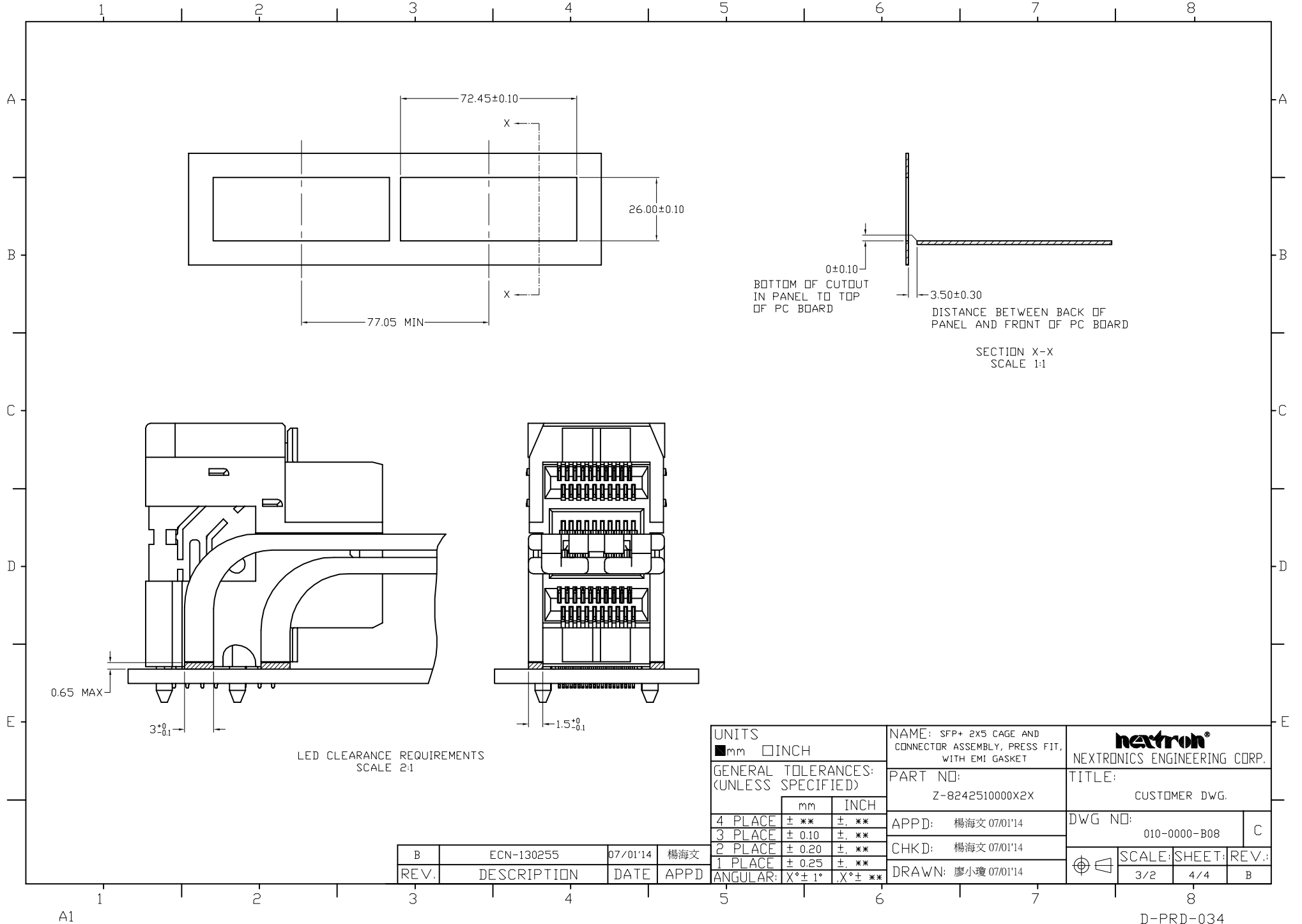
RECOMMENDE PCB LAYOUT
COMPONENT SIDE OF BOARD

DETAIL A
KEEPOUT ZONE
SCALE 2:1

DETAIL A
SCALE 2:1

UNITS ■mm □INCH		NAME: SFP+ 2X5 CAGE AND CONNECTOR ASSEMBLY, PRESS FIT, WITH EMI GASKET		 NEXTRONICS ENGINEERING CORP. TITLE: CUSTOMER DWG.	
GENERAL TOLERANCES: (UNLESS SPECIFIED)		PART NO: Z-8242510000X2X			
	mm	INCH	APPD: 楊海文 07/01'14	C	
4 PLACE	± **	± **	CHKD: 楊海文 07/01'14	SCALE: SHEET: REV.:	
3 PLACE	± 0.10	± **	DRAWN: 廖小瓊 07/01'14	3/2	3/4
2 PLACE	± 0.20	± **			
1 PLACE	± 0.25	± **			
ANGULAR:	X° ± 1°	X° ± **			

B	ECN-130255	07/01'14	楊海文
REV.	DESCRIPTION	DATE	APPD



0±0.10
 BOTTOM OF CUTOUT
 IN PANEL TO TOP
 OF PC BOARD

3.50±0.30
 DISTANCE BETWEEN BACK OF
 PANEL AND FRONT OF PC BOARD

SECTION X-X
 SCALE 1:1

LED CLEARANCE REQUIREMENTS
 SCALE 2:1

UNITS <input checked="" type="checkbox"/> mm <input type="checkbox"/> INCH		NAME: SFP+ 2X5 CAGE AND CONNECTOR ASSEMBLY, PRESS FIT, WITH EMI GASKET		 NEXTRONICS ENGINEERING CORP.	
GENERAL TOLERANCES: (UNLESS SPECIFIED)		PART NO: Z-8242510000X2X		TITLE: CUSTOMER DWG.	
	mm	INCH	APPD: 楊海文 07/01'14		DWG NO: 010-0000-B08
4 PLACE	± **.05	± **.002	CHKD: 楊海文 07/01'14		C
3 PLACE	± 0.10	± **.004	DRAWN: 廖小瓊 07/01'14		SCALE: SHEET: REV.:
2 PLACE	± 0.20	± **.008			3/2 4/4 B
1 PLACE	± 0.25	± **.010			
ANGULAR:	X° ± 1°	X° ± **.05			

B	ECN-130255	07/01'14	楊海文
REV.	DESCRIPTION	DATE	APPD