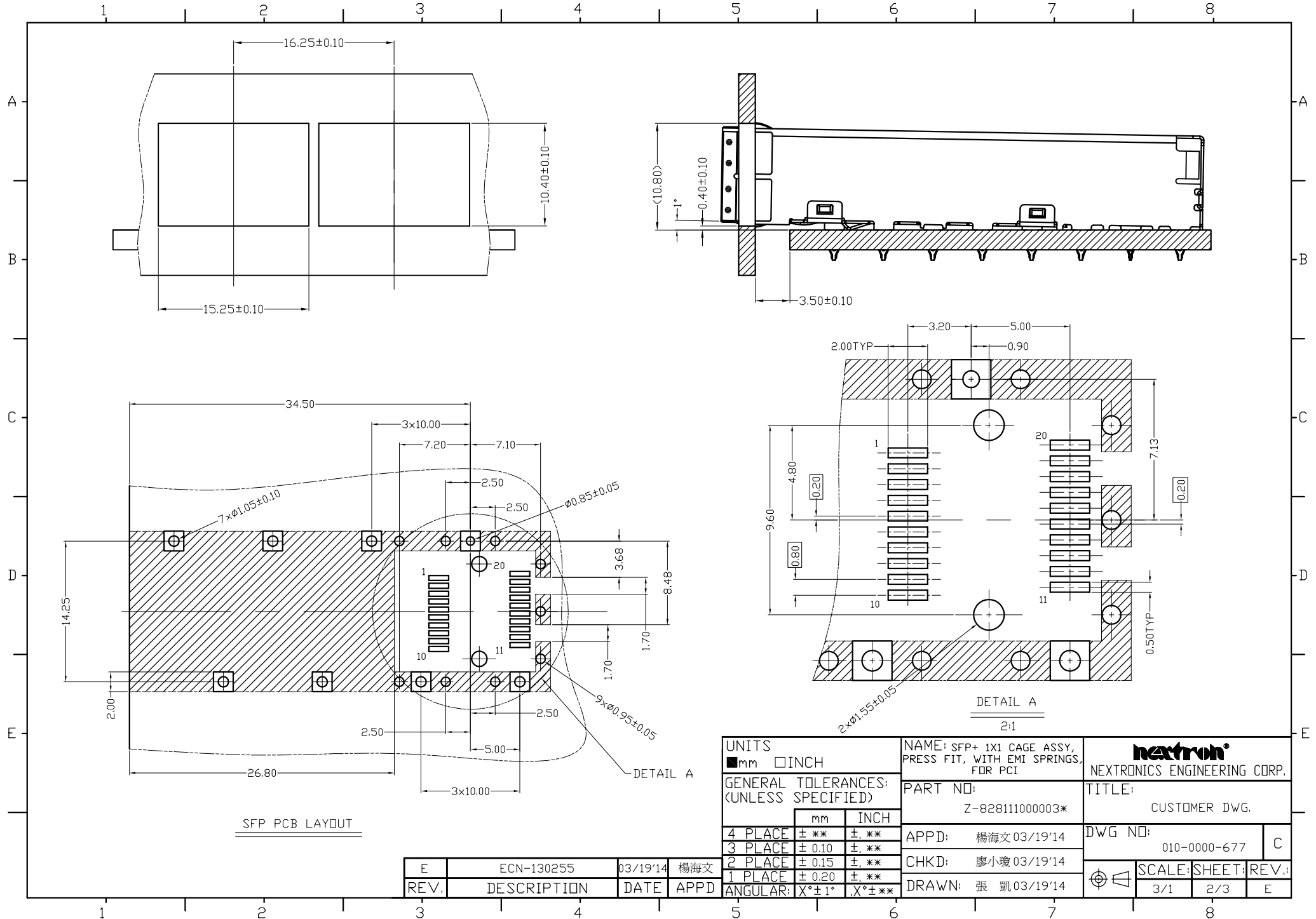


UNITS ■ mm □ INCH		NAME: SFP+ 1X1 CAGE ASSY, PRESS FIT, WITH EMI SPRINGS, FOR PCI		 NEXTRONICS ENGINEERING CORP.	
GENERAL TOLERANCES: (UNLESS SPECIFIED)		PART NO: Z-828111000003*			
		mm	INCH	APPD: 楊海文 03/19'14	DWG NO: 010-0000-677
4 PLACE	± **	± **.**	± **.**	CHKD: 廖小瓊 03/19'14	C
3 PLACE	± 0.10	± **.00	± **.00	DRAWN: 張凱 03/19'14	
2 PLACE	± 0.15	± **.00	± **.00		
1 PLACE	± 0.20	± **.00	± **.00		
ANGULAR:	X° ± 1°	X° ± **.00	X° ± **.00		
REV.	DESCRIPTION	DATE	APPD	SCALE: 3/1	SHEET: 1/3
E	ECN-130255	03/19'14	楊海文		REV.: E



UNITS ■mm □INCH		NAME: SFP+ 1X1 CAGE ASSY, PRESS FIT, WITH EMI SPRINGS, FOR PCI		 NEXTRONICS ENGINEERING CORP.	
GENERAL TOLERANCES: (UNLESS SPECIFIED)		PART NO: Z-828111000003*		TITLE: CUSTOMER DWG.	
	mm	INCH	APPD: 楊海文 03/19'14	DWG NO: 010-0000-677	
4 PLACE	± **	± **.**	CHKD: 廖小瓊 03/19'14	C	
3 PLACE	± 0.10	± **.**	DRAWN: 張凱 03/19'14	SCALE: SHEET: REV.: 3/1 2/3 E	
2 PLACE	± 0.15	± **.**			
1 PLACE	± 0.20	± **.**			
ANGULAR:	X°±1°	X°±**			

E	ECN-130255	03/19'14	楊海文
REV.	DESCRIPTION	DATE	APPD

A0

D-PRD-034

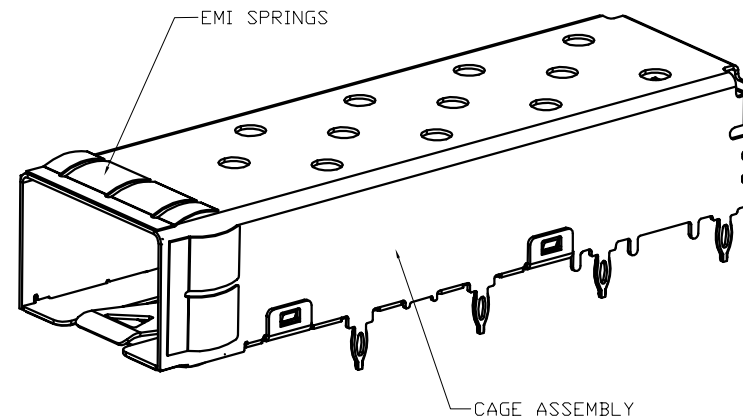
NOTE:

1. MATERIAL:
CAGE ASSEMBLY: COPPER ALLOY,
EMI SPRINGS: COPPER ALLOY.
2. FINISH:
CAGE ASSEMBLY & EMI SPRINGS: NICKEL PLATED.
3. MATES WITH SFP MSA COMPLIANT TRANSCEIVERS.
4. MINIMUM PC BOARD THICKNESS:
SINGLE SIDED = 1.50mm
5. THIS PART MEETS THE RESTRICTION OF HAZARDOUS SUBSTANCES IN
ELECTRICAL AND ELECTRONIC EQUIPMENT (ROHS) DIRECTIVE (2011/65/EU).


PART NUMBER:

Z-8 2 8 1 1 1 0 0 0 0 3 *

PRODUCT LOGO TYPE:
0=WITH NEXTRON LOGO
1=WITHOUT LOGO



Z-828111000003* AS SHOWN
SCALE 1:1

UNITS ■mm □INCH		NAME: SFP+ 1X1 CAGE ASSY, PRESS FIT, WITH EMI SPRINGS, FOR PCI		 NEXTRONICS ENGINEERING CORP.	
GENERAL TOLERANCES: (UNLESS SPECIFIED)		PART NO: Z-828111000003*			
		mm	INCH	APPD: 楊海文 03/19'14	DWG NO: 010-0000-677
4 PLACE	± **	± **.**		CHKD: 廖小瓊 03/19'14	SCALE: 3/1 SHEET: 3/3 REV.: E
3 PLACE	± 0.10	± **.**		DRAWN: 張凱 03/19'14	
2 PLACE	± 0.15	± **.**			
1 PLACE	± 0.20	± **.**			
ANGULAR:	X° ± 1°	X° ± **.**			

E	ECN-130255	03/19'14	楊海文
REV.	DESCRIPTION	DATE	APPD