

Z-828121000012* AS SHOWN
SCALE 1:1

NOTE:

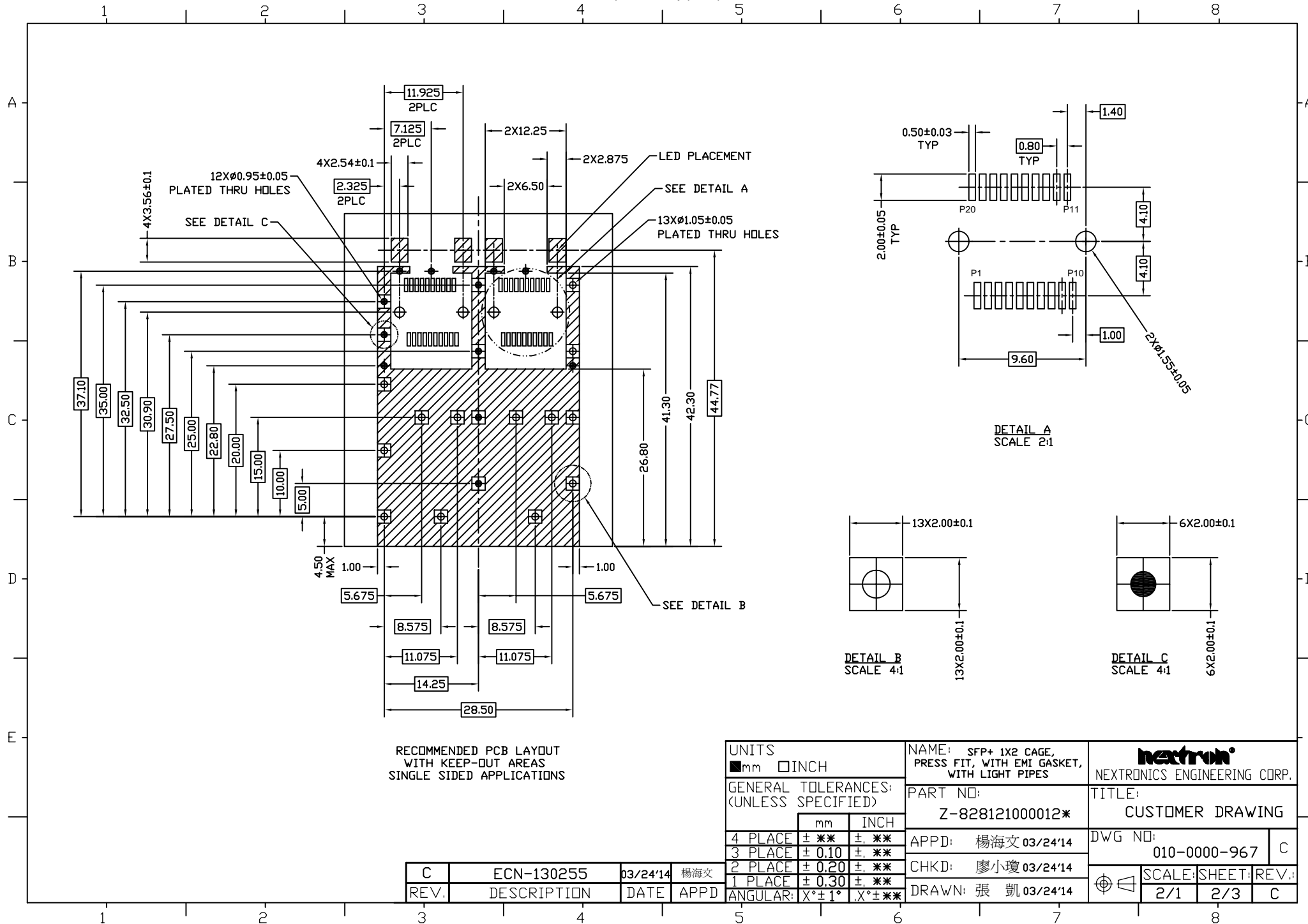
1. MATERIAL:
CAGE ASSEMBLY: COPPER ALLOY.
LIGHT PIPE BRACKET: COPPER ALLOY.
LIGHT PIPE: PC, CLEAR.
ELASTOMERIC GASKET: PLATED FILLED SILICONE.
2. FINISH:
CAGE ASSEMBLY: NICKEL PLATED.
LIGHT PIPE BRACKET: NICKEL PLATED.
3. MATES WITH SFP MSA COMPLIANT TRANSCEIVERS.
4. MINIMUM PC BOARD THICKNESS:
SINGLE SIDED = 1.50mm
DOUBLE SIDED = 2.25mm
5. LIGHT PIPE ASSEMBLY SHIPPED UNASSEMBLED TO CAGE ASSEMBLY.
CAGE ASSEMBLY TO BE PRESSED INTO THE PCB PRIOR TO ATTACHING THE LIGHT PIPE ASSEMBLY TO THE CAGE.
6. THIS PART MEETS THE RESTRICTION OF HAZARDOUS SUBSTANCES IN ELECTRICAL AND ELECTRONIC EQUIPMENT (ROHS) DIRECTIVE (2011/65/EU).

Z-828121000012X

LOGO OPTIONS:
0=WITH NEXTRON LOGO
1=WITHOUT LOGO

UNITS ■mm □INCH		NAME: SFP+ 1X2 CAGE, PRESS FIT, WITH EMI GASKET, WITH LIGHT PIPES		NEXTRONICS ENGINEERING CORP.	
GENERAL TOLERANCES: (UNLESS SPECIFIED)		PART NO: Z-828121000012*		TITLE: CUSTOMER DRAWING	
	mm	INCH	APPD: 楊海文 03/24'14	DWG NO: 010-0000-967 C	
4 PLACE	± **	± **.**	CHKD: 廖小瓊 03/24'14	SCALE: SHEET: REV.:	
3 PLACE	± 0.10	± **.00	DRAWN: 張 凱 03/24'14	2/1	1/3
2 PLACE	± 0.20	± **.00			
1 PLACE	± 0.30	± **.00			
ANGULAR:	X° ± 1°	X° ± **.00			

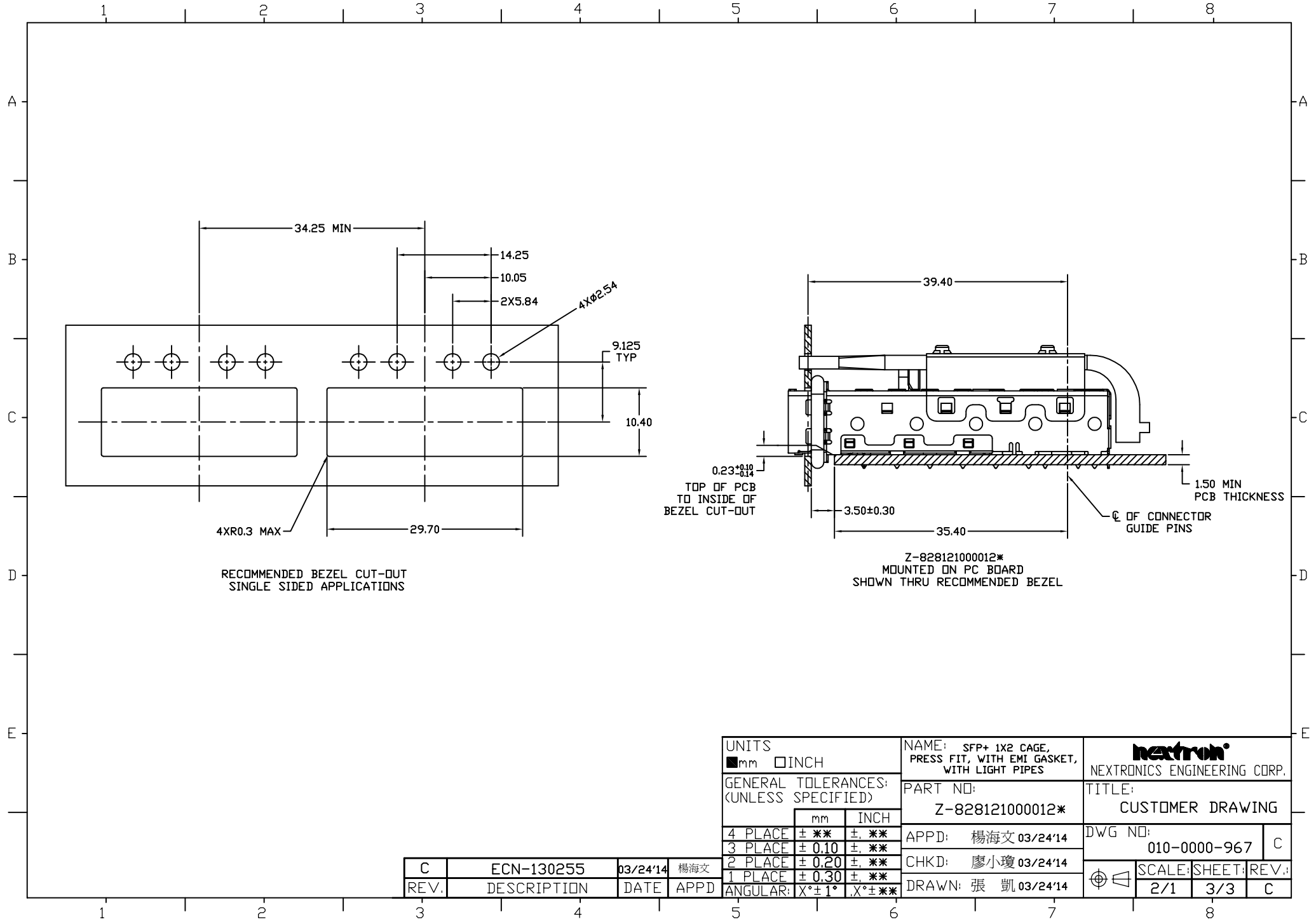
C	ECN-130255	03/24'14	楊海文
REV.	DESCRIPTION	DATE	APPD



RECOMMENDED PCB LAYOUT WITH KEEP-OUT AREAS SINGLE SIDED APPLICATIONS

UNITS <input checked="" type="checkbox"/> mm <input type="checkbox"/> INCH		NAME: SFP+ 1X2 CAGE, PRESS FIT, WITH EMI GASKET, WITH LIGHT PIPES		NEXTRONICS ENGINEERING CORP.		
GENERAL TOLERANCES: (UNLESS SPECIFIED)		PART NO: Z-828121000012*				TITLE: CUSTOMER DRAWING
	mm	INCH	APPD: 楊海文 03/24'14		DWG NO: 010-0000-967 C	
4 PLACE	± **	±. **	CHKD: 廖小瓊 03/24'14		SCALE: SHEET: REV.:	
3 PLACE	± 0.10	±. **	DRAWN: 張 凱 03/24'14		2/1	2/3 C
2 PLACE	± 0.20	±. **				
1 PLACE	± 0.30	±. **				
ANGULAR:	X° ± 1°	X° ± **				

C	ECN-130255	03/24'14	楊海文
REV.	DESCRIPTION	DATE	APPD



UNITS ■mm □INCH		NAME: SFP+ 1X2 CAGE, PRESS FIT, WITH EMI GASKET, WITH LIGHT PIPES		 NEXTRONICS ENGINEERING CORP.	
GENERAL TOLERANCES: (UNLESS SPECIFIED)		PART NO: Z-828121000012*			
	mm	INCH	APPD: 楊海文 03/24'14	DWG NO: 010-0000-967 C	
4 PLACE	± **	± **	CHKD: 廖小瓊 03/24'14	SCALE:	SHEET:
3 PLACE	± 0.10	± **	DRAWN: 張 凱 03/24'14	2/1	3/3
2 PLACE	± 0.20	± **		REV.:	C
1 PLACE	± 0.30	± **			
ANGULAR:	X°±1°	X°±**			

C	ECN-130255	03/24'14	楊海文
REV.	DESCRIPTION	DATE	APPD