

LIGHT PIPE ASSEMBLY  
Z-8290411000000

CAGE ASSEMBLY  
Z-828121000600\*

Z-828121000610\* AS SHOWN  
SCALE 1:1

NOTE:

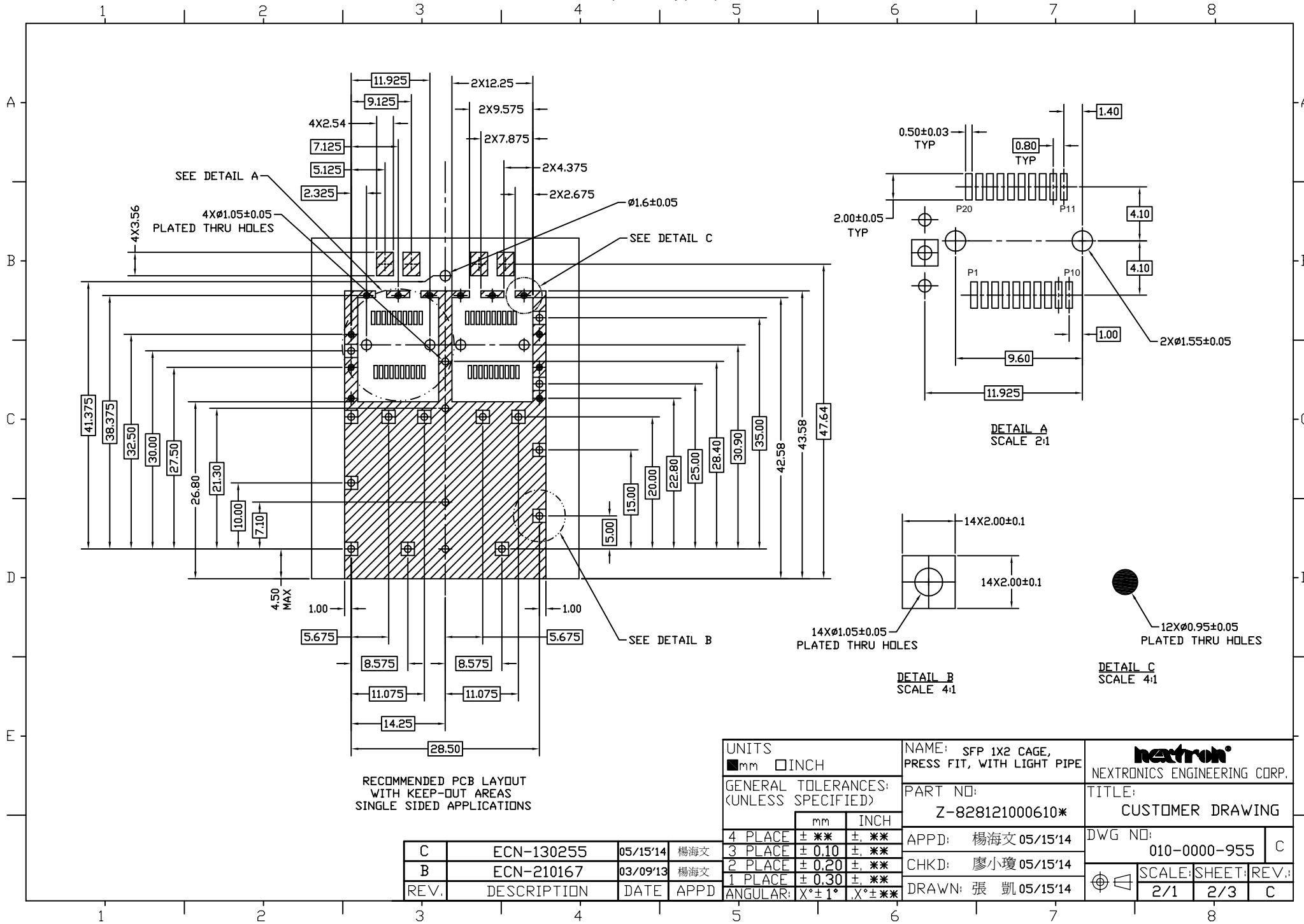
1. MATERIAL:  
CAGE ASSEMBLY: COPPER ALLOY.  
LIGHT PIPE: PC, CLEAR
2. FINISH:  
CAGE ASSEMBLY: NICKEL PLATED.  
EMI SPRING: NICKEL PLATED
3. MINIMUM PC BOARD THICKNESS:  
SINGLE SIDED = 1.50mm
4. LIGHT PIPE ASSEMBLY SHIPPED UNASSEMBLED TO CAGE ASSEMBLY.  
CAGE ASSEMBLY TO BE PRESSED INTO THE PCB PRIOR TO ATTACHING  
THE LIGHT PIPE ASSEMBLY TO THE CAGE.
5. THIS PART MEETS THE RESTRICTION OF HAZARDOUS SUBSTANCES IN  
ELECTRICAL AND ELECTRONIC EQUIPMENT (ROHS) DIRECTIVE (2011/65/EU).

Z-828121000610X

LOGO OPTIONS:  
0=WITH NEXTRON LOGO  
1=WITHOUT LOGO

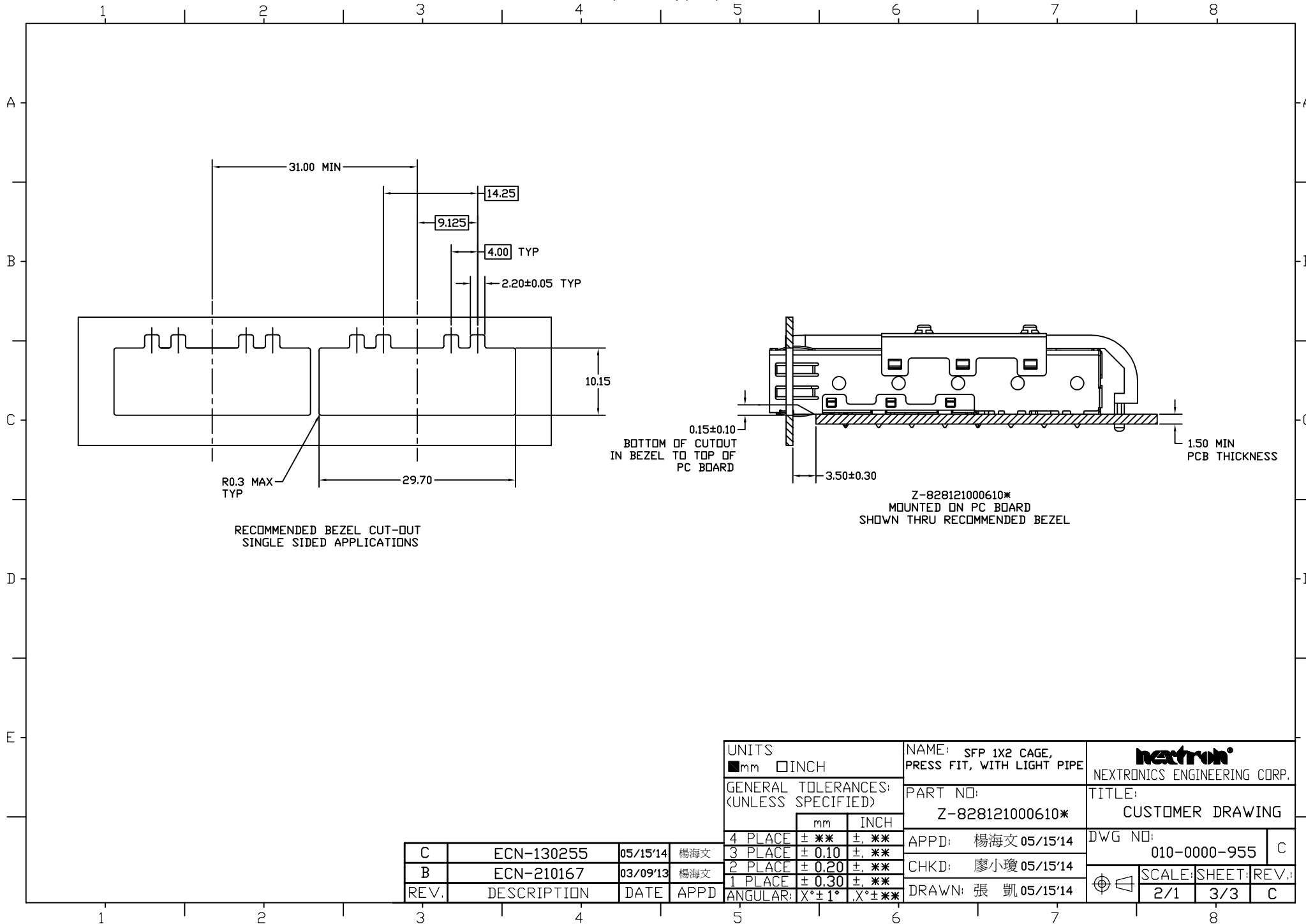
UNITS ■mm □INCH		NAME: SFP 1X2 CAGE, PRESS FIT, WITH LIGHT PIPE		NEXTRONICS ENGINEERING CORP.	
GENERAL TOLERANCES: (UNLESS SPECIFIED)		PART NO: Z-828121000610*		TITLE: CUSTOMER DRAWING	
	mm	INCH	APPD: 楊海文 05/15'14	DWG NO: 010-0000-955 C	
4 PLACE	± **.05	± **.002	CHKD: 廖小瓊 05/15'14	SCALE: SHEET: REV.: 2/1 1/3 C	
3 PLACE	± 0.10	± **.004	DRAWN: 張 凱 05/15'14		
2 PLACE	± 0.20	± **.008			
1 PLACE	± 0.30	± **.012			
ANGULAR:	X° ± 1°	X° ± **.05			

REV.	DESCRIPTION	DATE	APPD
C	ECN-130255	05/15'14	楊海文
B	ECN-210167	03/09'13	楊海文



A0

D-PRD-034



RECOMMENDED BEZEL CUT-OUT  
SINGLE SIDED APPLICATIONS

0.15±0.10  
BOTTOM OF CUTOUT  
IN BEZEL TO TOP OF  
PC BOARD

Z-828121000610\*  
MOUNTED ON PC BOARD  
SHOWN THRU RECOMMENDED BEZEL

UNITS ■mm □INCH		NAME: SFP 1X2 CAGE, PRESS FIT, WITH LIGHT PIPE		 NEXTRONICS ENGINEERING CORP.	
GENERAL TOLERANCES: (UNLESS SPECIFIED)		PART NO: Z-828121000610*		TITLE: CUSTOMER DRAWING	
	mm	INCH	APPD: 楊海文 05/15'14	DWG NO: 010-0000-955 C	
C	ECN-130255	05/15'14	楊海文	CHKD: 廖小瓊 05/15'14	SCALE: SHEET: REV.: 2/1 3/3 C
B	ECN-210167	03/09'13	楊海文	DRAWN: 張 凱 05/15'14	
REV.	DESCRIPTION	DATE	APPD	ANGULAR: X°±1° X°±**	

A0

D-PRD-034