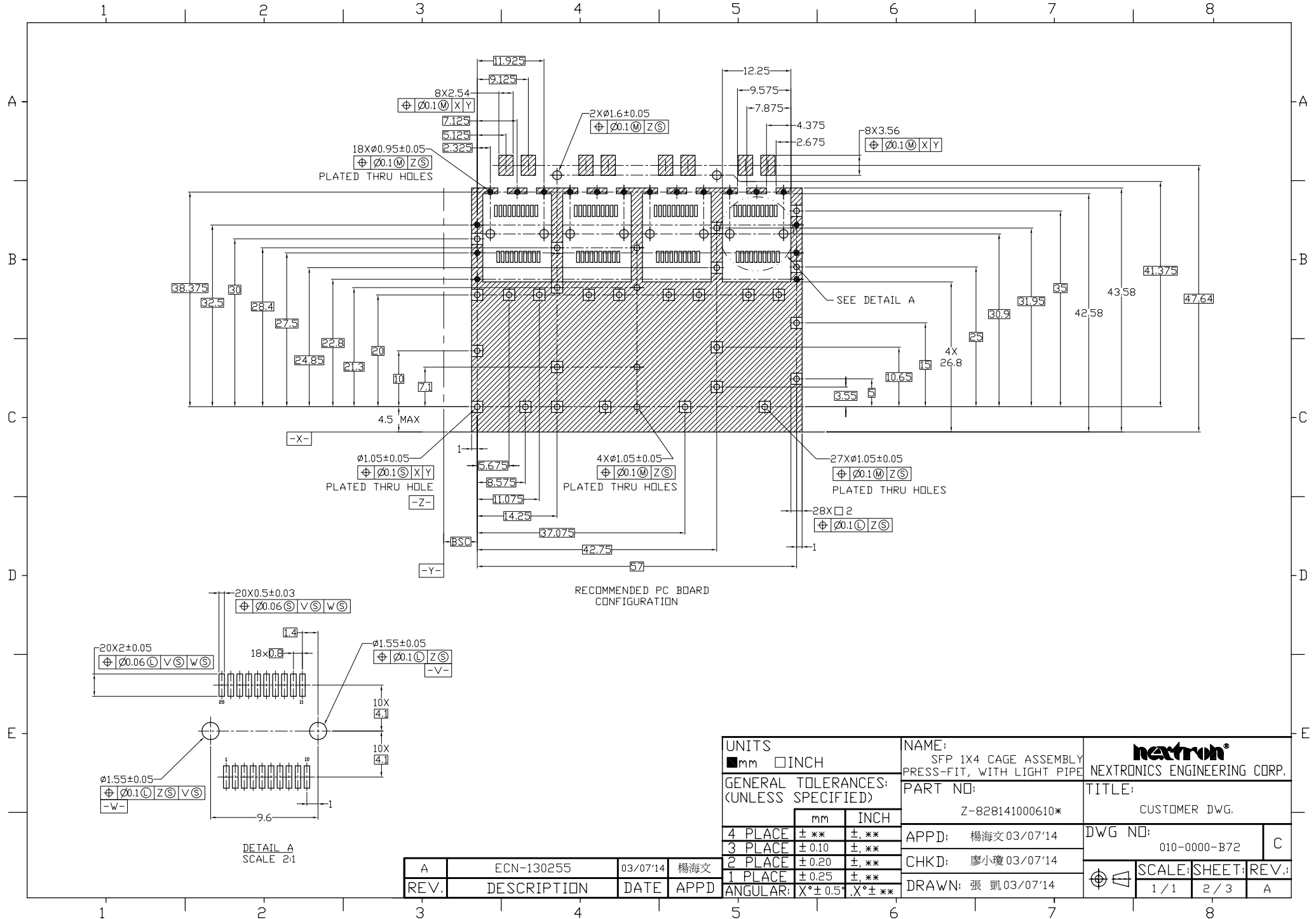


NOTE:

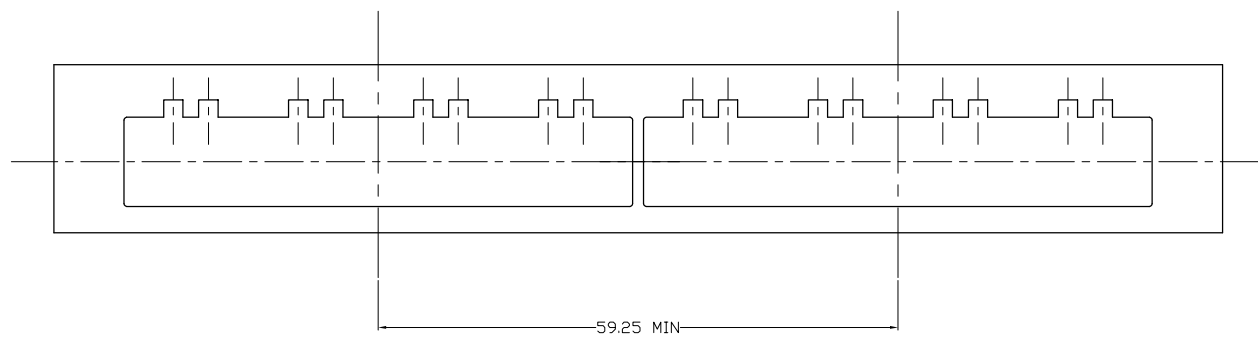
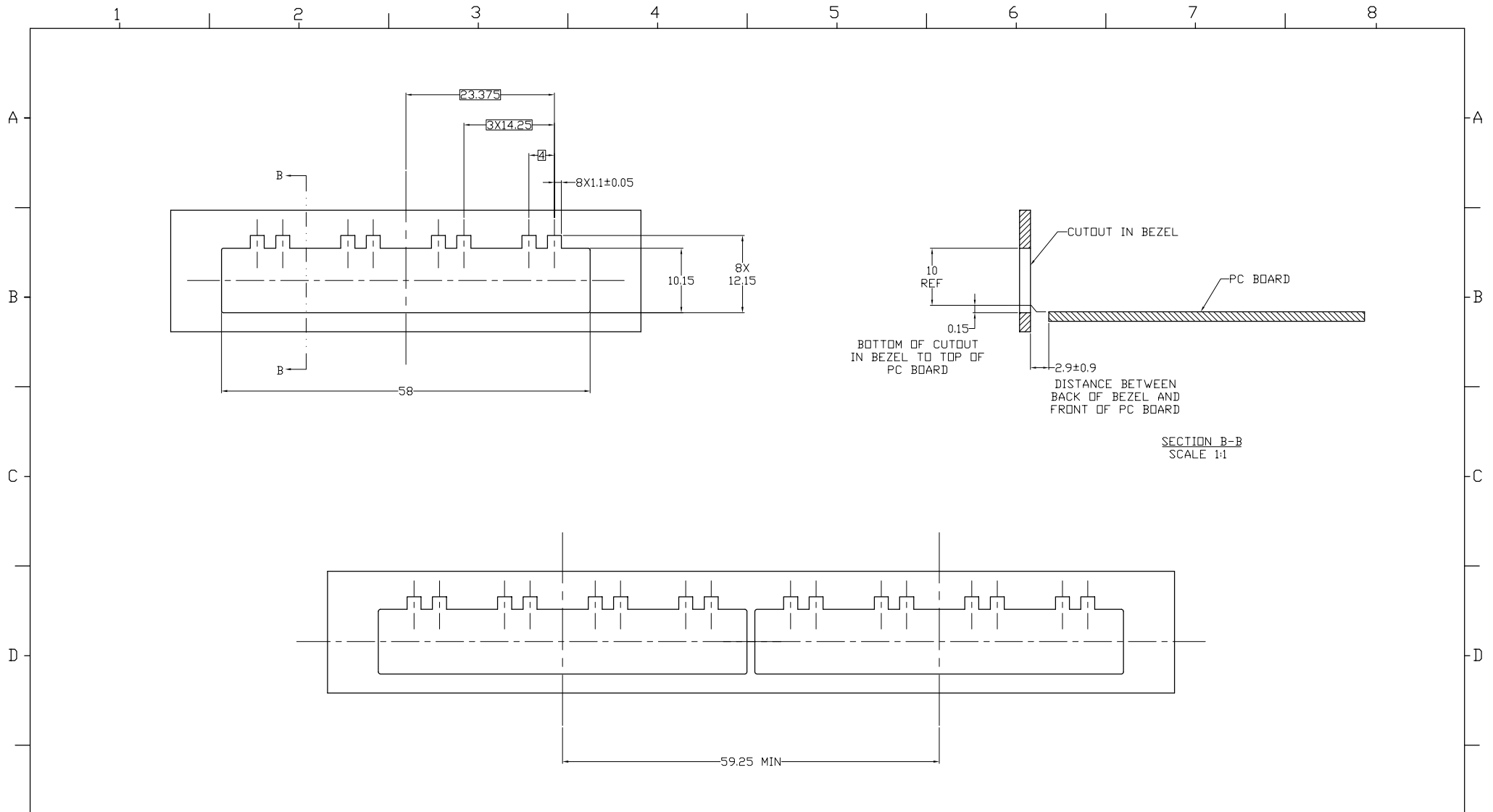
- MATERIAL:**
 CAGE ASSEMBLY: COPPER ALLOY.
 LIGHT PIPE BRACKET: COPPER ALLOY.
 LIGHT PIPE: PC, CLEAR.
- FINSH:**
 CAGE ASSEMBLY: NICKEL PLATED.
 LIGHT PIPE BRACKET: NICKEL PLATED.
- LITHT PIPE ASSEMBLY SHIPPED UNASSEMBLED TO CAGE ASSEMBLY.
 CAGE ASSEMBLY TO BE PRESSED INTO THE PCB PRIOR TO ATTACHING THE LIGHT PIPE ASSEMBLY TO THE CAGE.
- THIS PART MEETS THE RESTRICTION OF HAZARDOUS SUBSTANCES IN ELECTRICAL AND ELECTRONIC EQUIPMENT (ROHS) DIRECTIVE (2011/65/EU).



UNITS ■mm □INCH		NAME: SFP 1X4 CAGE ASSEMBLY PRESS-FIT, WITH LIGHT PIPE		NEXTRONICS ENGINEERING CORP.	
GENERAL TOLERANCES: (UNLESS SPECIFIED)		PART NO: Z-828141000610*		TITLE: CUSTOMER DWG.	
	mm	INCH	APPD: 楊海文 03/07'14		DWG NO: 010-0000-B72
4 PLACE	±.**	±.**	CHKD: 廖小瓊 03/07'14		C
3 PLACE	±0.10	±.**	DRAWN: 張凱 03/07'14		
2 PLACE	±0.20	±.**	SCALE: 1/1		SHEET: 2/3
1 PLACE	±0.25	±.**	REV.: A		
ANGULAR:	X°±0.5°	X°±.**			

A	ECN-130255	03/07'14	楊海文
REV.	DESCRIPTION	DATE	APPD

DETAIL A
SCALE 2:1



UNITS ■mm □INCH		NAME: SFP 1X4 CAGE ASSEMBLY PRESS-FIT, WITH LIGHT PIPE		nexttron® NEXTRONICS ENGINEERING CORP.	
GENERAL TOLERANCES: (UNLESS SPECIFIED)		PART NO: Z-828141000610*		TITLE: CUSTOMER DWG.	
	mm	INCH	APPD: 楊海文 03/07'14	DWG NO: 010-0000-B72	
4 PLACE	±**	±,**	CHKD: 廖小瓊 03/07'14	C	
3 PLACE	±0.10	±,**	DRAWN: 張凱 03/07'14	SCALE: SHEET: REV.:	
2 PLACE	±0.20	±,**		1 / 1	3 / 3
1 PLACE	±0.25	±,**			A
ANGULAR:	X°±0.5°	X°±**			

REV.	DESCRIPTION	DATE	APPD
A	ECN-130255	03/07'14	楊海文