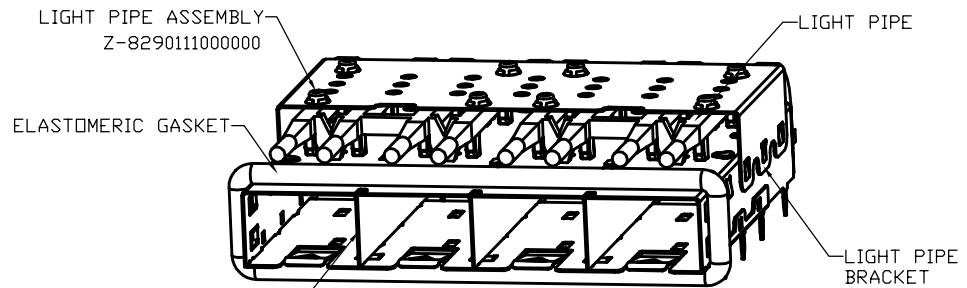


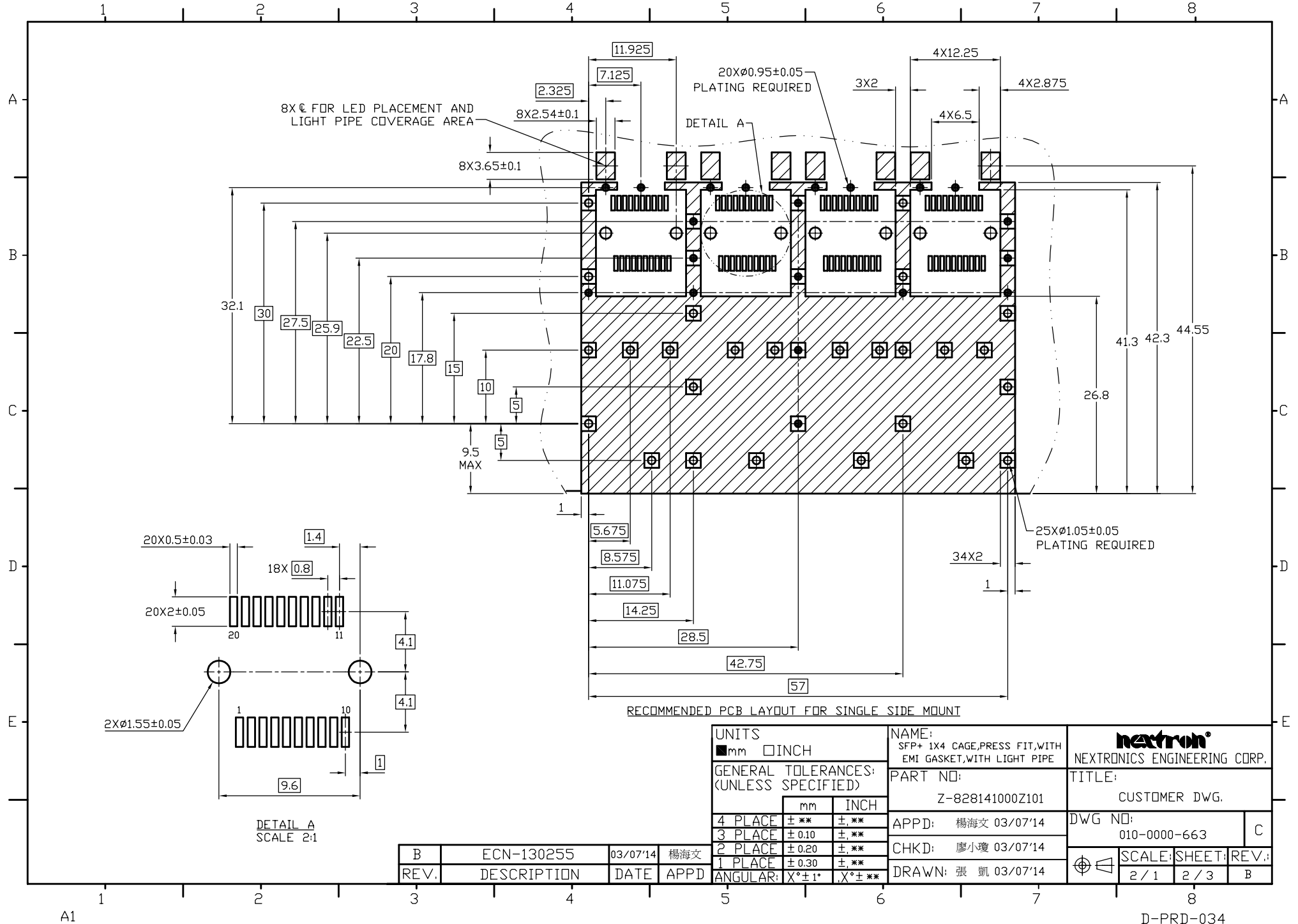
- NOTE:
1. MATERIAL:
CAGE ASSEMBLY: COPPER ALLOY.
LIGHT PIPE BRACKET: COPPER ALLOY.
LIGHT PIPE: PC, CLEAR.
ELASTOMERIC GASKET: PLATED FILLED SILICONE.
 2. FINISH:
CAGE ASSEMBLY: NICKEL PLATED.
LIGHT PIPE BRACKET: NICKEL PLATED.
 3. MATES WITH SFP MSA COMPLIANT TRANSCEIVERS.
 4. MINIMUM PC BOARD THICKNESS:
SINGLE SIDED = 1.50mm
 5. LIGHT PIPE ASSEMBLY SHIPPED UNASSEMBLED TO CAGE ASSEMBLY.
CAGE ASSEMBLY TO BE PRESSED INTO THE PCB PRIOR TO ATTACHING THE LIGHT PIPE ASSEMBLY TO THE CAGE.
 6. THIS PART MEETS THE RESTRICTION OF HAZARDOUS SUBSTANCES IN ELECTRICAL AND ELECTRONIC EQUIPMENT (ROHS) DIRECTIVE (2002/95/EC).



CAGE ASSEMBLY Z-828141000Z001
FINISHED ASSEMBLY Z-828141000Z101
SCALE 1:1

UNITS ■ mm □ INCH		NAME: SFP+ 1X4 CAGE,PRESS FIT,WITH EMI GASKET,WITH LIGHT PIPE		NEXTRONIC ENGINEERING CORP.	
GENERAL TOLERANCES: (UNLESS SPECIFIED)		PART NO: Z-828141000Z101		TITLE: CUSTOMER DWG.	
	mm	INCH	APPD: 楊海文 03/07'14	DWG NO: 010-0000-663	
4 PLACE	±**	±,**	CHKD: 廖小瓊 03/07'14	C	
3 PLACE	±0.10	±,**	DRAWN: 張凱 03/07'14	SCALE: SHEET: REV.: 2 / 1 1 / 3 B	
2 PLACE	±0.20	±,**			
1 PLACE	±0.30	±,**			
ANGULAR:	X°±1'	X°±**			

B	ECN-130255	03/07'14	楊海文
REV.	DESCRIPTION	DATE	APPD

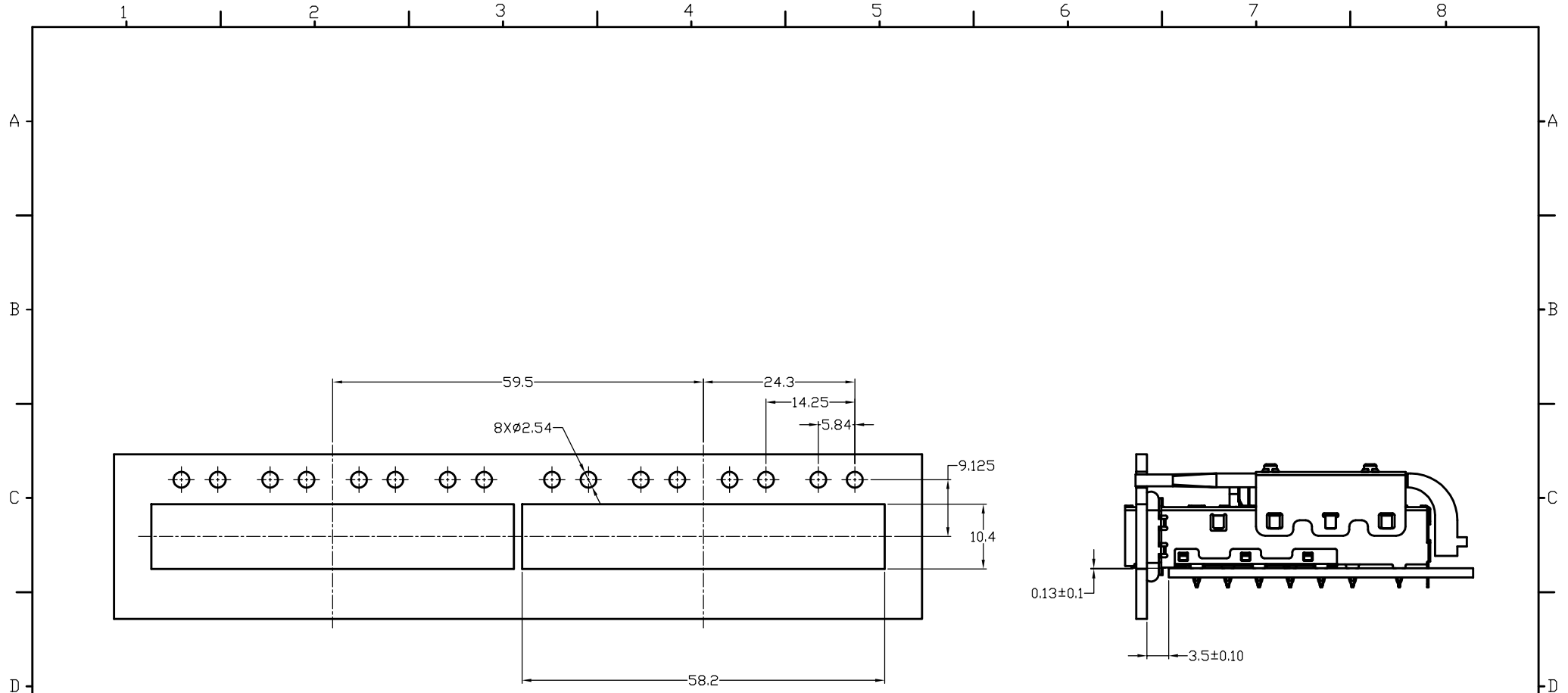


RECOMMENDED PCB LAYOUT FOR SINGLE SIDE MOUNT

UNITS <input checked="" type="checkbox"/> mm <input type="checkbox"/> INCH		NAME: SFP+ 1X4 CAGE,PRESS FIT,WITH EMI GASKET,WITH LIGHT PIPE		NEXTRONICS ENGINEERING CORP. TITLE: CUSTOMER DWG.	
GENERAL TOLERANCES: (UNLESS SPECIFIED)		PART NO: Z-828141000Z101			
		mm	INCH	APPD: 楊海文 03/07'14	DWG NO: 010-0000-663
4 PLACE	±.03	±.0012	±.0012	CHKD: 廖小瓊 03/07'14	C
3 PLACE	±.04	±.0016	±.0016	DRAWN: 張凱 03/07'14	SCALE: SHEET: REV.: 2 / 1 2 / 3 B
2 PLACE	±.05	±.0020	±.0020		
1 PLACE	±.08	±.0031	±.0031		
ANGULAR:	X°±1°	X°±.04°	X°±.04°		

B	ECN-130255	03/07'14	楊海文
REV.	DESCRIPTION	DATE	APPD

DETAIL A
SCALE 2:1



RECOMMENDED BEZEL CUT-OUT AND BOARD POSITION DIMENSIONS FOR SINGLE SIDE MOUNTING

UNITS ■mm □INCH		NAME: SFP+ 1X4 CAGE,PRESS FIT,WITH EMI GASKET,WITH LIGHT PIPE		NEXTRONICS ENGINEERING CORP.	
GENERAL TOLERANCES: (UNLESS SPECIFIED)		PART NO: Z-828141000Z101		TITLE: CUSTOMER DWG.	
	mm	INCH	APPD: 楊海文 03/07'14	DWG NO: 010-0000-663	
4 PLACE	±.**	±.**	CHKD: 廖小瓊 03/07'14	C	
3 PLACE	±0.10	±.**	DRAWN: 張凱 03/07'14	SCALE: SHEET: REV.: 2 / 1 3 / 3 B	
2 PLACE	±0.20	±.**			
1 PLACE	±0.30	±.**			
ANGULAR:	X°±1°	X°±.**			

B	ECN-130255	03/07'14	楊海文
REV.	DESCRIPTION	DATE	APPD