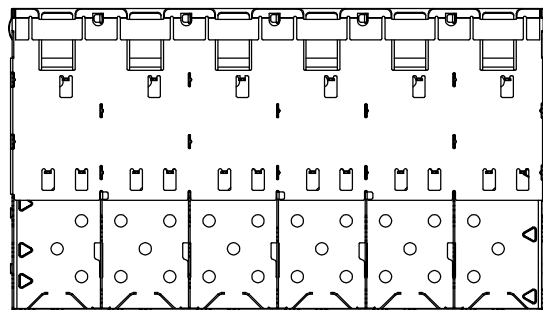
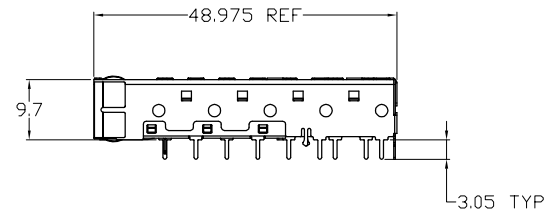
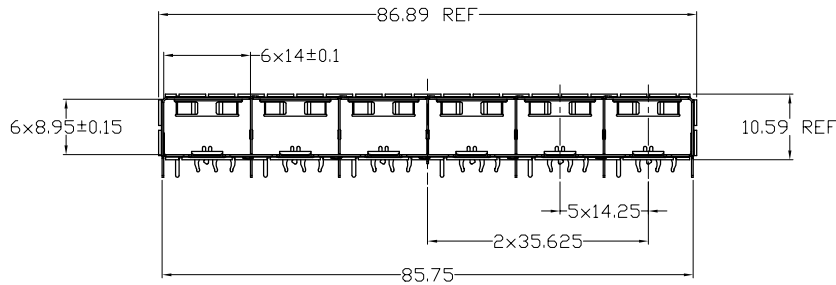


Z-828160000001* AS SHOWN
SCALE 1:1

NOTE:

1. MATERIAL:
CAGE ASSEMBLY: COPPER ALLOY.
EMI SPRINGS: COPPER ALLOY.
2. FINISH:
CAGE ASSEMBLY: NICKEL PLATED.
EMI SPRINGS: NICKEL PLATED.
3. MATES WITH SFP MSA COMPLIANT TRANSCEIVERS.
4. MINIMUM PC BOARD THICKNESS:
SINGLE SIDED = 1.50mm
5. THIS PART MEETS THE RESTRICTION OF HAZARDOUS
SUBSTANCES IN ELECTRICAL AND ELECTRONIC EQUIPMENT
(ROHS) DIRECTIVE (2011/65/EU).



Z-828 * * * 0 0 0 0 * 1 *

PRODUCT TYPE:
16=SFP 1X6

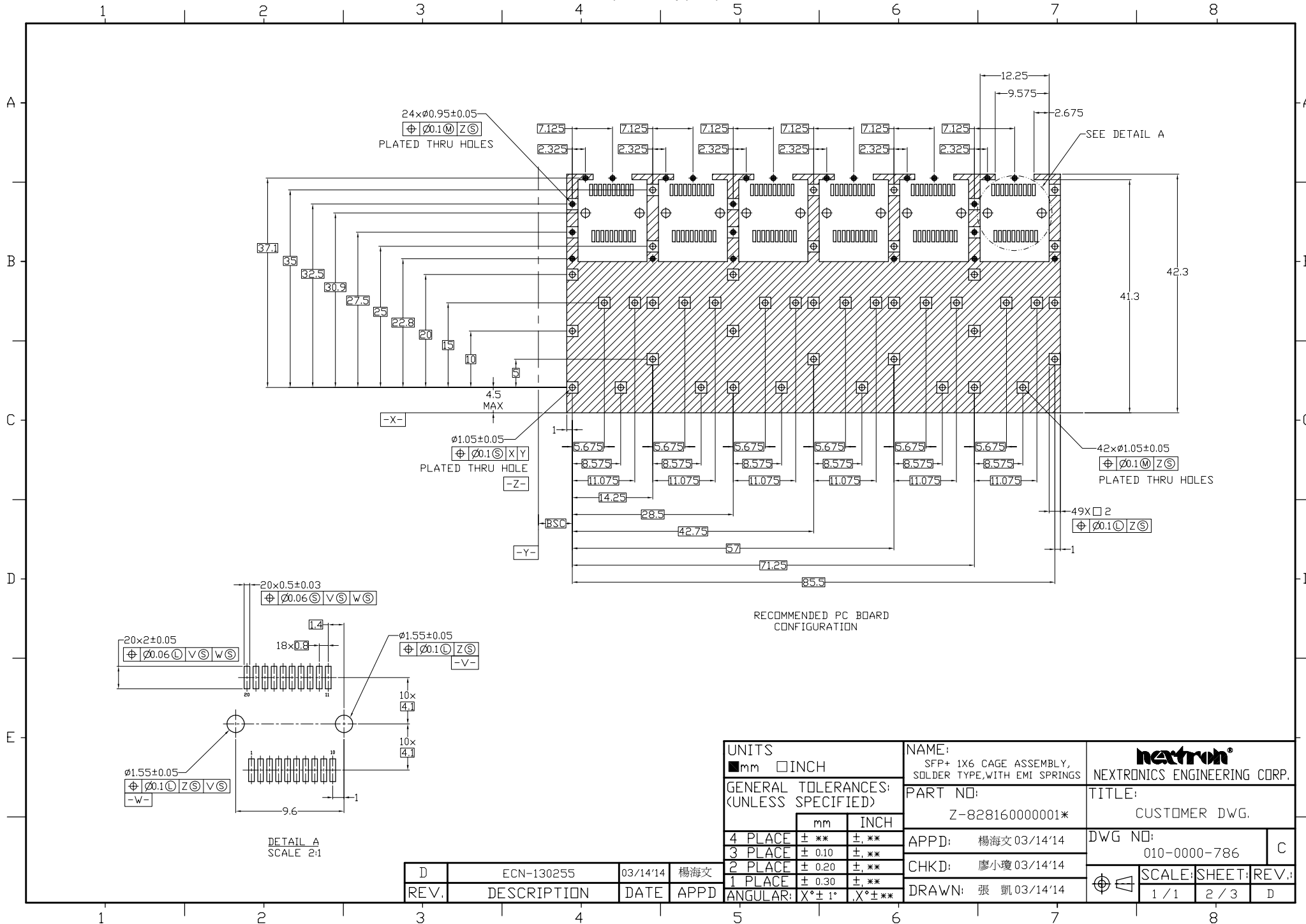
TAIL TYPE:
0=SOLDER

LOGO TYPE:
0=WITH NEXTRON LOGO
1=WITHOUT LOGO

LIGHT PIPE TYPE:
0=WITHOUT LIGHT PIPE

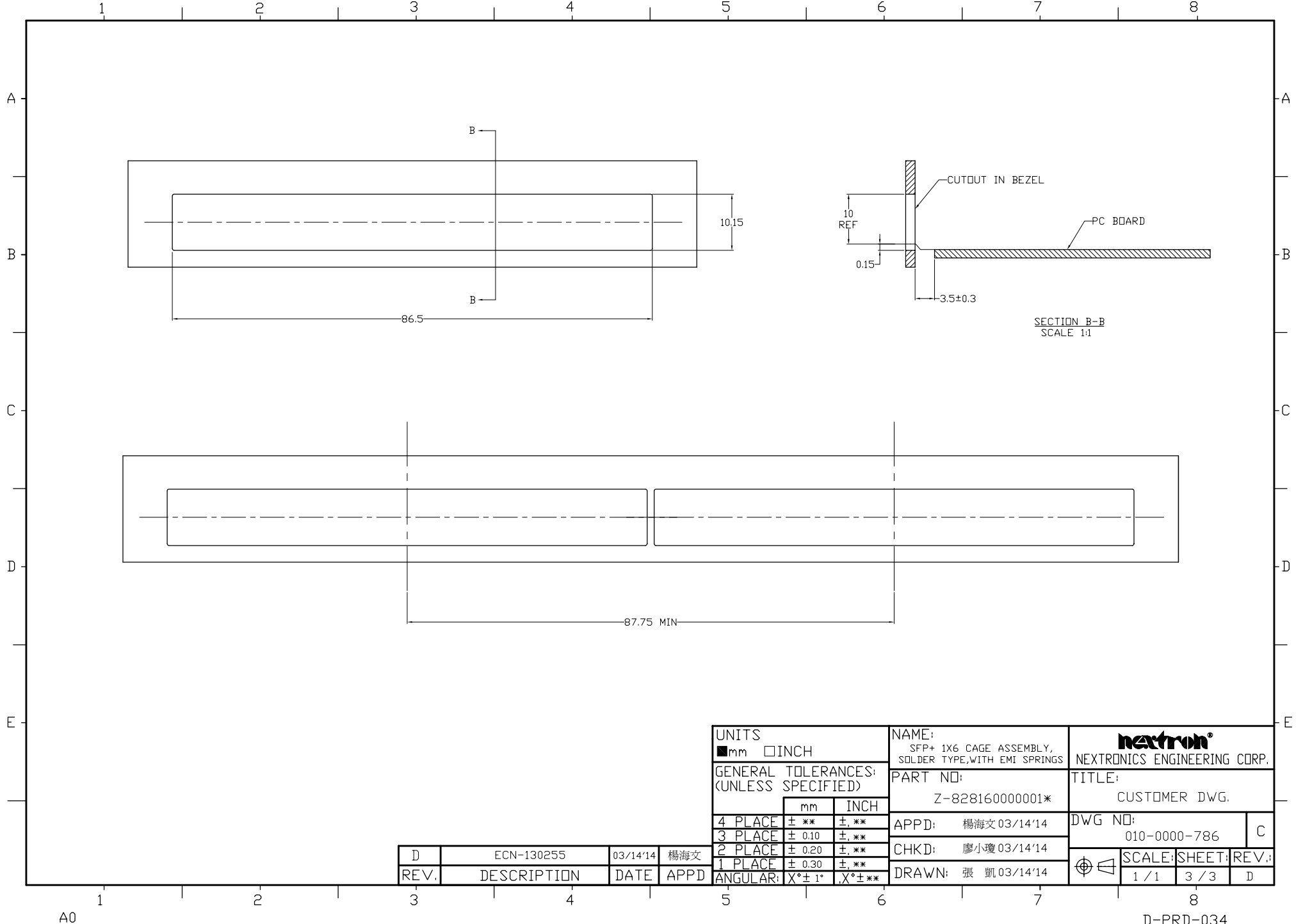
UNITS ■mm □INCH		NAME: SFP+ 1X6 CAGE ASSEMBLY, SOLDER TYPE, WITH EMI SPRINGS		nextron NEXTRONICS ENGINEERING CORP.	
GENERAL TOLERANCES: (UNLESS SPECIFIED)		PART NO: Z-828160000001*		TITLE: CUSTOMER DWG.	
	mm	INCH	APPD: 楊海文 03/14'14	DWG NO: 010-0000-786	
4 PLACE	± **	± **.**	CHKD: 廖小瓊 03/14'14	C	
3 PLACE	± 0.10	± **.**	DRAWN: 張凱 03/14'14	SCALE: SHEET: REV.: 1 / 1 1 / 3 D	
2 PLACE	± 0.20	± **.**			
1 PLACE	± 0.30	± **.**			
ANGULAR:	X° ± 1°	X° ± **.**			

D	ECN-130255	03/14'14	楊海文
REV.	DESCRIPTION	DATE	APPD



UNITS <input checked="" type="checkbox"/> mm <input type="checkbox"/> INCH		NAME: SFP+ 1X6 CAGE ASSEMBLY, SOLDER TYPE, WITH EMI SPRINGS		NEXTRONICS ENGINEERING CORP.	
GENERAL TOLERANCES: (UNLESS SPECIFIED)		PART NO: Z-82816000001*		TITLE: CUSTOMER DWG.	
		APPD: 楊海文 03/14'14		DWG NO: 010-0000-786	
		CHKD: 廖小瓊 03/14'14		C	
		DRAWN: 張凱 03/14'14		SCALE: SHEET: REV.:	
				1 / 1 2 / 3 D	

D	ECN-130255	03/14'14	楊海文
REV.	DESCRIPTION	DATE	APPD



UNITS <input checked="" type="checkbox"/> mm <input type="checkbox"/> INCH		NAME: SFP+ 1X6 CAGE ASSEMBLY, SOLDER TYPE, WITH EMI SPRINGS		NEXTRONICS ENGINEERING CORP.	
GENERAL TOLERANCES: (UNLESS SPECIFIED)		PART NO: Z-828160000001*		TITLE: CUSTOMER DWG.	
	mm	INCH	APPD: 楊海文 03/14'14	DWG NO: 010-0000-786	
4 PLACE	± **.	± **.	CHKD: 廖小瓊 03/14'14	C	
3 PLACE	± 0.10	± **.	DRAWN: 張凱 03/14'14	SCALE: SHEET: REV.:	
2 PLACE	± 0.20	± **.		1 / 1	3 / 3
1 PLACE	± 0.30	± **.			D
ANGULAR:	X° ± 1°	X° ± **.			

D	ECN-130255	03/14'14	楊海文
REV.	DESCRIPTION	DATE	APPD