

NOTE:

1. MATERIAL:  
CAGE ASSEMBLY: COPPER ALLOY.  
ELASTOMERIC GASKET: PLATED FILLED SILICONE.
2. FINISH:  
CAGE ASSEMBLY: NICKEL PLATED.
3. MATES WITH SFP MSA COMPLIANT TRANSCEIVERS.
4. MINIMUM PC BOARD THICKNESS:  
SINGLE SIDED = 1.50mm
5. THIS PART MEETS THE RESTRICTION OF HAZARDOUS SUBSTANCES IN ELECTRICAL AND ELECTRONIC EQUIPMENT (ROHS) DIRECTIVE (2011/65/EU).

Z-828 \* \* \* 0 0 0 0 \* 2 \*

PRODUCT TYPE: 16=SFP 1X6

TAIL TYPE: 0=SOLDER

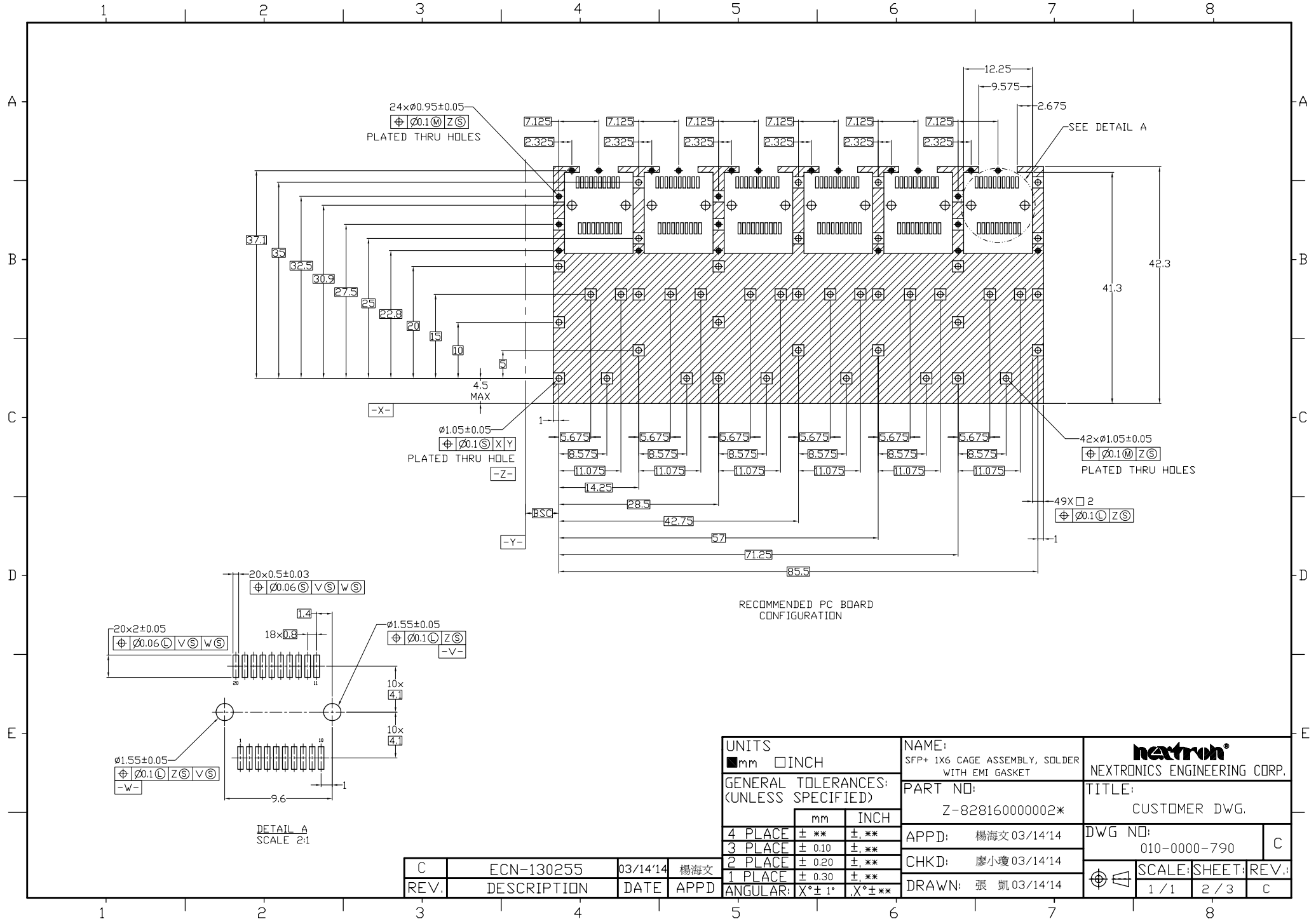
LOGO TYPE: 0=WITH NEXTRON LOGO 1=WITHOUT LOGO

LIGHT PIPE TYPE: 0=WITHOUT LIGHT PIPE

Z-828160000002\* AS SHOWN  
SCALE: 1:1

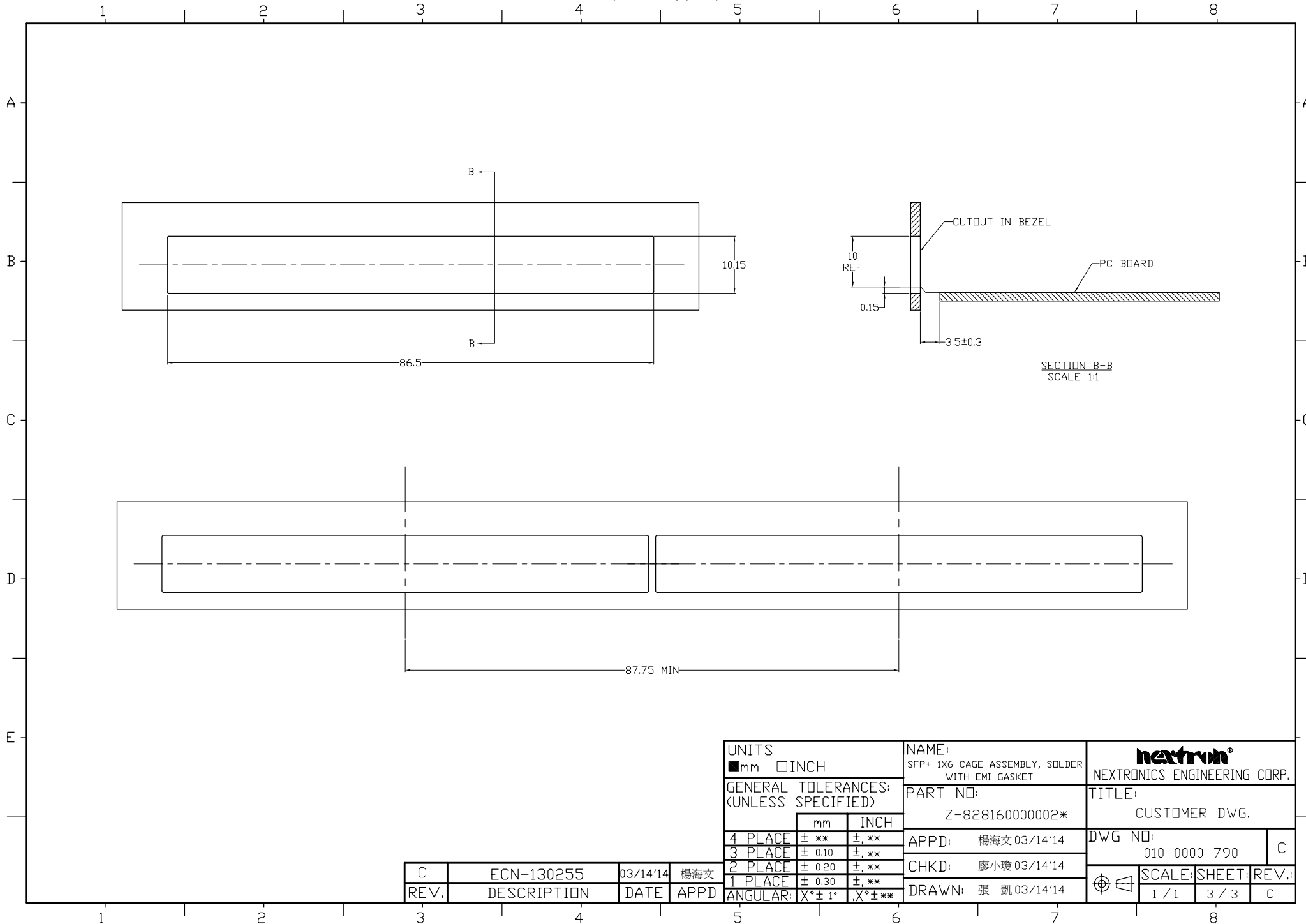
UNITS ■mm □INCH		NAME: SFP+ 1X6 CAGE ASSEMBLY, SOLDER WITH EMI GASKET		NEXTRON ENGINEERING CORP.	
GENERAL TOLERANCES: (UNLESS SPECIFIED)		PART NO: Z-828160000002*		TITLE: CUSTOMER DWG.	
	mm	INCH	APPD: 楊海文 03/14'14	DWG NO: 010-0000-790	
4 PLACE	± **	± **.0005	CHKD: 廖小瓊 03/14'14	SCALE: SHEET: REV.: 1 / 1 1 / 3 C	
3 PLACE	± 0.10	± .004	DRAWN: 張凱 03/14'14		
2 PLACE	± 0.20	± .008			
1 PLACE	± 0.30	± .012			
ANGULAR:	X° ± 1°	X° ± **.0005			

C	ECN-130255	03/14'14	楊海文
REV.	DESCRIPTION	DATE	APPD



UNITS ■ mm □ INCH		NAME: SFP+ 1X6 CAGE ASSEMBLY, SOLDER WITH EMI GASKET		 NEXTRONICS ENGINEERING CORP.	
GENERAL TOLERANCES: (UNLESS SPECIFIED)		PART NO: Z-828160000002*		TITLE: CUSTOMER DWG.	
		mm	INCH	APPD: 楊海文 03/14'14	DWG NO: 010-0000-790
4 PLACE	± **.	± **.		CHKD: 廖小瓊 03/14'14	C
3 PLACE	± 0.10	± **.		DRAWN: 張凱 03/14'14	
2 PLACE	± 0.20	± **.			
1 PLACE	± 0.30	± **.			
ANGULAR:	X° ± 1°	X° ± **.			

C	ECN-130255	03/14'14	楊海文
REV.	DESCRIPTION	DATE	APPD



UNITS	
■ mm	□ INCH
GENERAL TOLERANCES: (UNLESS SPECIFIED)	
	mm INCH
4 PLACE	± **. ± **.
3 PLACE	± 0.10 ± **.
2 PLACE	± 0.20 ± **.
1 PLACE	± 0.30 ± **.
ANGULAR:	X° ± 1° X° ± **.

NAME:	SFP+ 1X6 CAGE ASSEMBLY, SOLDER WITH EMI GASKET
PART NO:	Z-828160000002*
APPD:	楊海文 03/14'14
CHKD:	廖小瓊 03/14'14
DRAWN:	張凱 03/14'14

 NEXTRONICS ENGINEERING CORP.		
TITLE: CUSTOMER DWG.		
DWG NO: 010-0000-790		C
SCALE:	SHEET:	REV.:
1 / 1	3 / 3	C

C	ECN-130255	03/14'14	楊海文
REV.	DESCRIPTION	DATE	APPD