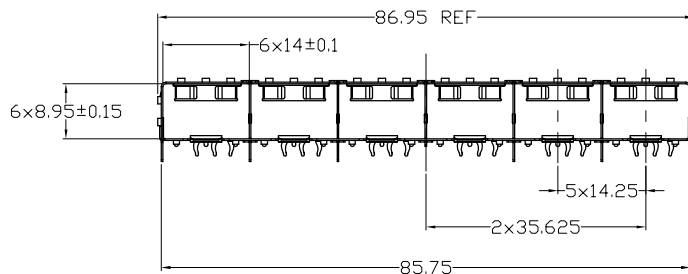
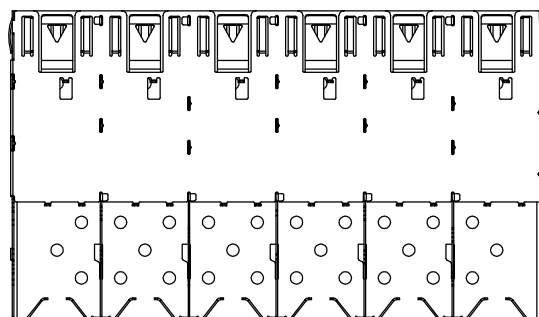
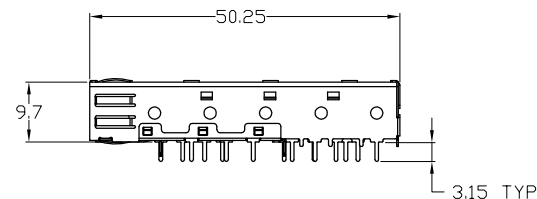


Z-828160000600* AS SHOWN
SCALE 1:1



NOTE:

1. MATERIAL:
CAGE ASSEMBLY: COPPER ALLOY.
2. FINISH:
NICKEL PLATED.
3. MATES WITH SFP MSA COMPLIANT TRANSCEIVERS.
4. MINIMUM PC BOARD THICKNESS:
SINGLE SIDED = 1.50mm
5. THIS PART MEETS THE RESTRICTION OF HAZARDOUS
SUBSTANCES IN ELECTRICAL AND ELECTRONIC EQUIPMENT
(ROHS) DIRECTIVE (2011/65/EU).



Z-828 * * * 0 0 0 6 * 0 *

PRODUCT TYPE: 16=SFP 1X6

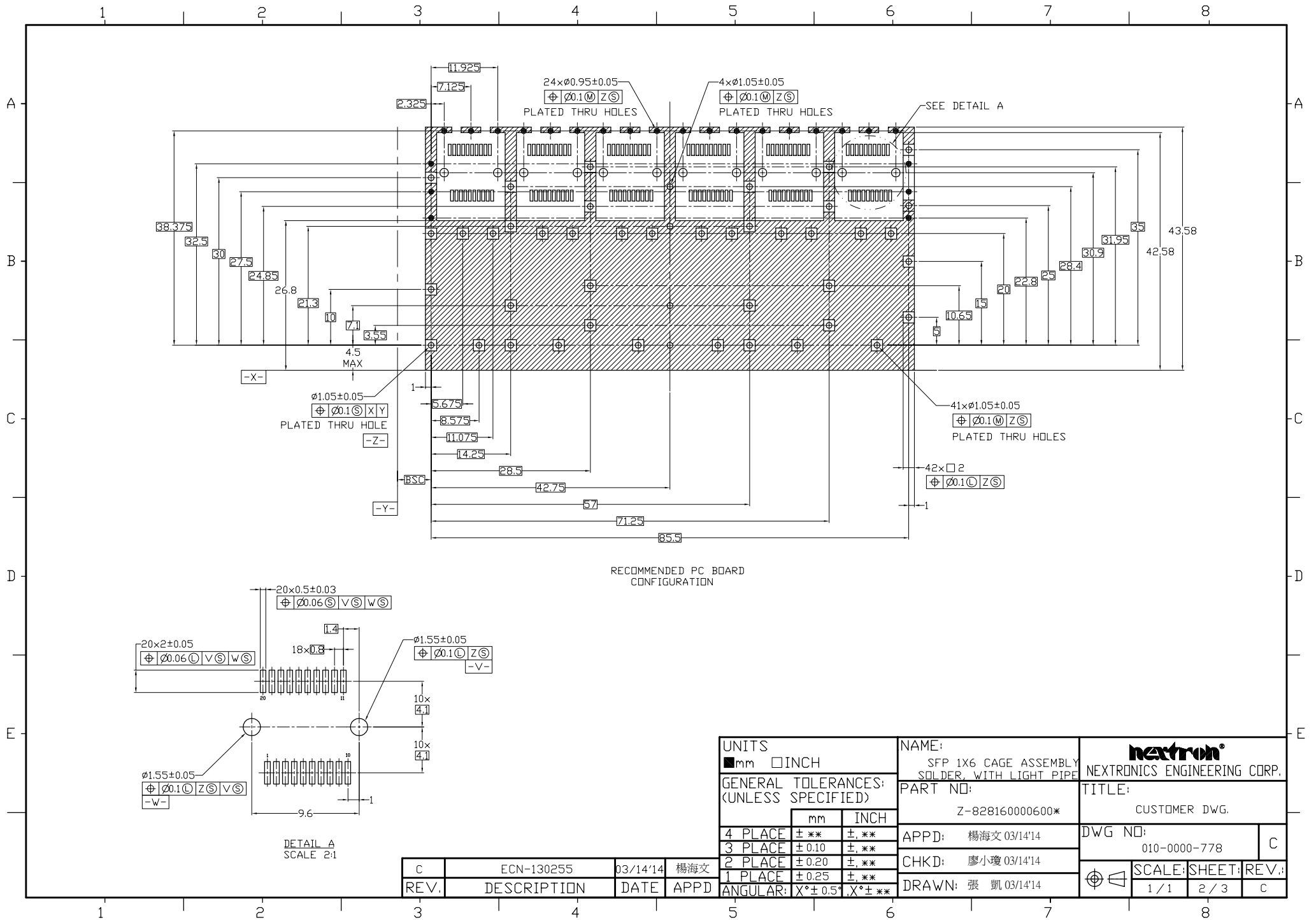
TAIL TYPE: 0=SOLDER

LOGO TYPE:
0=WITH NEXTRON LOGO
1=WITHOUT LOGO

LIGHT PIPE TYPE:
0=WITHOUT LIGHT PIPE

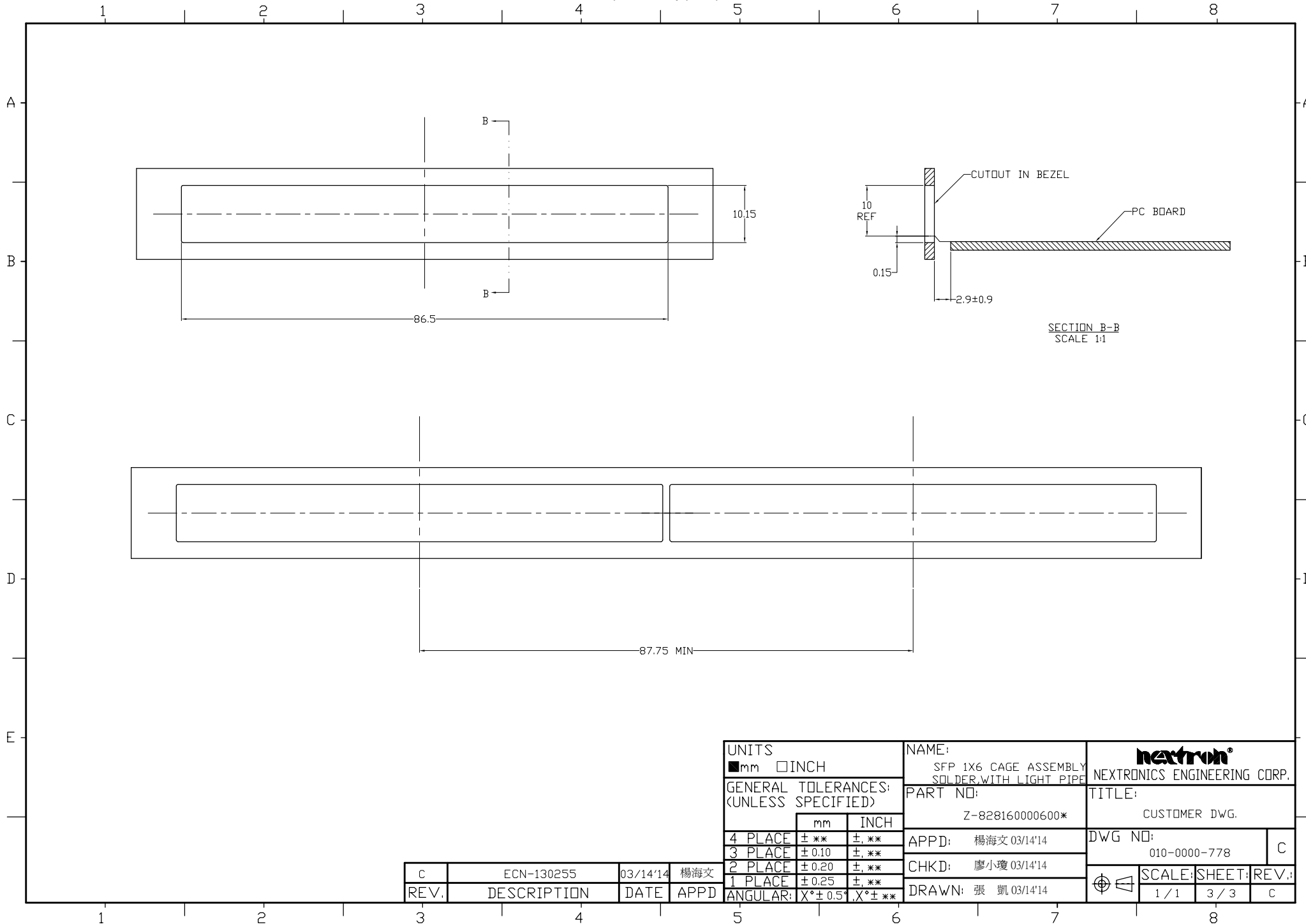
UNITS ■mm □INCH		NAME: SFP 1X6 CAGE ASSEMBLY SOLDER, WITH LIGHT PIPE		 NEXTRONICS ENGINEERING CORP.	
GENERAL TOLERANCES: (UNLESS SPECIFIED)		PART NO: Z-828160000600*			
	mm	INCH	APPD: 楊海文 03/14'14	DWG NO: 010-0000-778	
4 PLACE	±**	±,**	CHKD: 廖小瓊 03/14'14	C	
3 PLACE	±0.10	±,**	DRAWN: 張 凱 03/14'14	SCALE: SHEET: REV.: 1 / 1 1 / 3 C	
2 PLACE	±0.20	±,**			
1 PLACE	±0.30	±,**			
ANGULAR:	X°±1°	X°±**			

C	ECN-130255	03/14'14	楊海文
REV.	DESCRIPTION	DATE	APPD



UNITS ■ mm □ INCH		NAME: SFP 1X6 CAGE ASSEMBLY SOLDER, WITH LIGHT PIPE		NEXTRON® NEXTRONICS ENGINEERING CORP.	
GENERAL TOLERANCES: (UNLESS SPECIFIED)		PART NO: Z-828160000600*		TITLE: CUSTOMER DWG.	
4 PLACE	±.**	APPD:	楊海文 03/14'14	DWG NO:	010-0000-778
3 PLACE	±.10	CHKD:	廖小瓊 03/14'14	SCALE:	1 / 1
2 PLACE	±.20	DRAWN:	張 凱 03/14'14	SHEET:	2 / 3
1 PLACE	±.25			REV.:	C
ANGULAR:	X° ± 0.5°, X° ± **				

C	ECN-130255	03/14'14	楊海文
REV.	DESCRIPTION	DATE	APPD



UNITS ■mm □INCH		NAME: SFP 1X6 CAGE ASSEMBLY SOLDER WITH LIGHT PIPE		NEXTRONICS ENGINEERING CORP.	
GENERAL TOLERANCES: (UNLESS SPECIFIED)		PART NO: Z-828160000600*		TITLE: CUSTOMER DWG.	
	mm	INCH	APPD: 楊海文 03/14'14	DWG NO: 010-0000-778	
4 PLACE	±**	±,**	CHKD: 廖小瓊 03/14'14	C	
3 PLACE	±0.10	±,**	DRAWN: 張 凱 03/14'14	SCALE: SHEET: REV.: 1/1 3/3 C	
2 PLACE	±0.20	±,**			
1 PLACE	±0.25	±,**			
ANGULAR:	X°±0.5°	X°±**			

C	ECN-130255	03/14'14	楊海文
REV.	DESCRIPTION	DATE	APPD