

NOTE:

- MATERIAL:
CAGE ASSEMBLY: COPPER ALLOY.
ELASTOMERIC GASKET: PLATED FILLED SILICONE.
LIGHT PIPE BRACKET: COPPER ALLOY.
LIGHT PIPE: PC, CLEAR.
- FINISH:
CAGE ASSEMBLY: NICKEL PLATED.
LIGHT PIPE BRACKET: NICKEL PLATED.
- MATES WITH SFP MSA COMPLIANT TRANSCEIVERS.
- MINIMUM PC BOARD THICKNESS:
SINGLE SIDED = 1.50mm
- THIS PART MEETS THE RESTRICTION OF HAZARDOUS SUBSTANCES IN ELECTRICAL AND ELECTRONIC EQUIPMENT (ROHS) DIRECTIVE (2011/65/EU).

Z-828 *** * 0 0 0 0 * 2 *

PRODUCT TYPE: 16=SFP 1X6

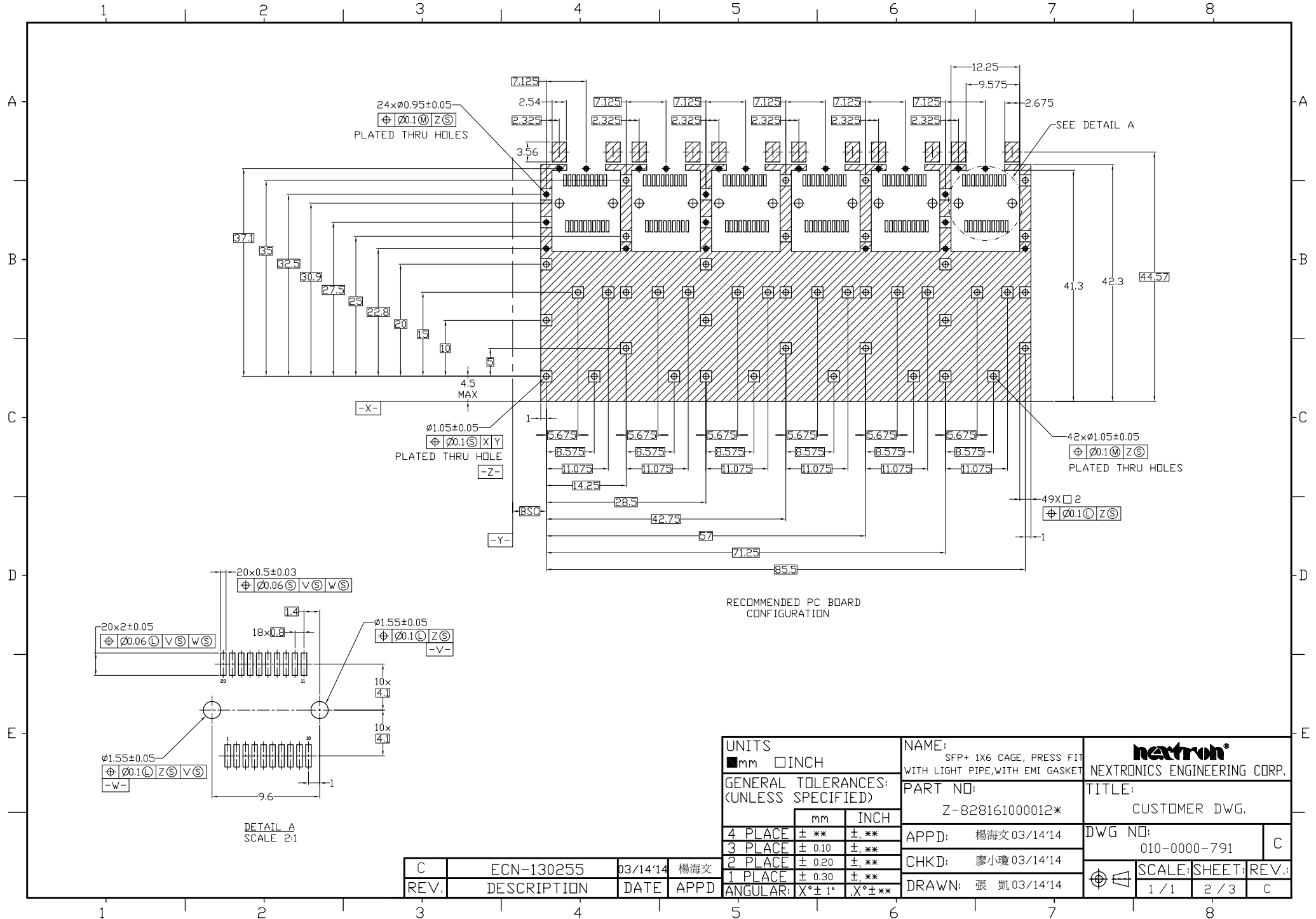
TAIL TYPE: 1=PRESS FIT

LOGO TYPE:
0=WITH NEXTRON LOGO
1=WITHOUT LOGO

LIGHT PIPE TYPE:
1=WITH LIGHT PIPE

UNITS ■mm □INCH		NAME: SFP+ 1X6 CAGE, PRESS FIT WITH LIGHT PIPE, WITH EMI GASKET		NEXTRON® NEXTRONICS ENGINEERING CORP.	
GENERAL TOLERANCES: (UNLESS SPECIFIED)		PART NO: Z-828161000012*		TITLE: CUSTOMER DWG.	
	mm	INCH	APPD: 楊海文 03/14'14	DWG NO: 010-0000-791	
4 PLACE	± **	± **.00	CHKD: 廖小瓊 03/14'14	C	
3 PLACE	± 0.10	± .004	DRAWN: 張凱 03/14'14	SCALE: SHEET: REV.: 1 / 1 1 / 3 C	
2 PLACE	± 0.20	± .008			
1 PLACE	± 0.30	± .012			
ANGULAR:	X° ± 1°	X° ± **.05			

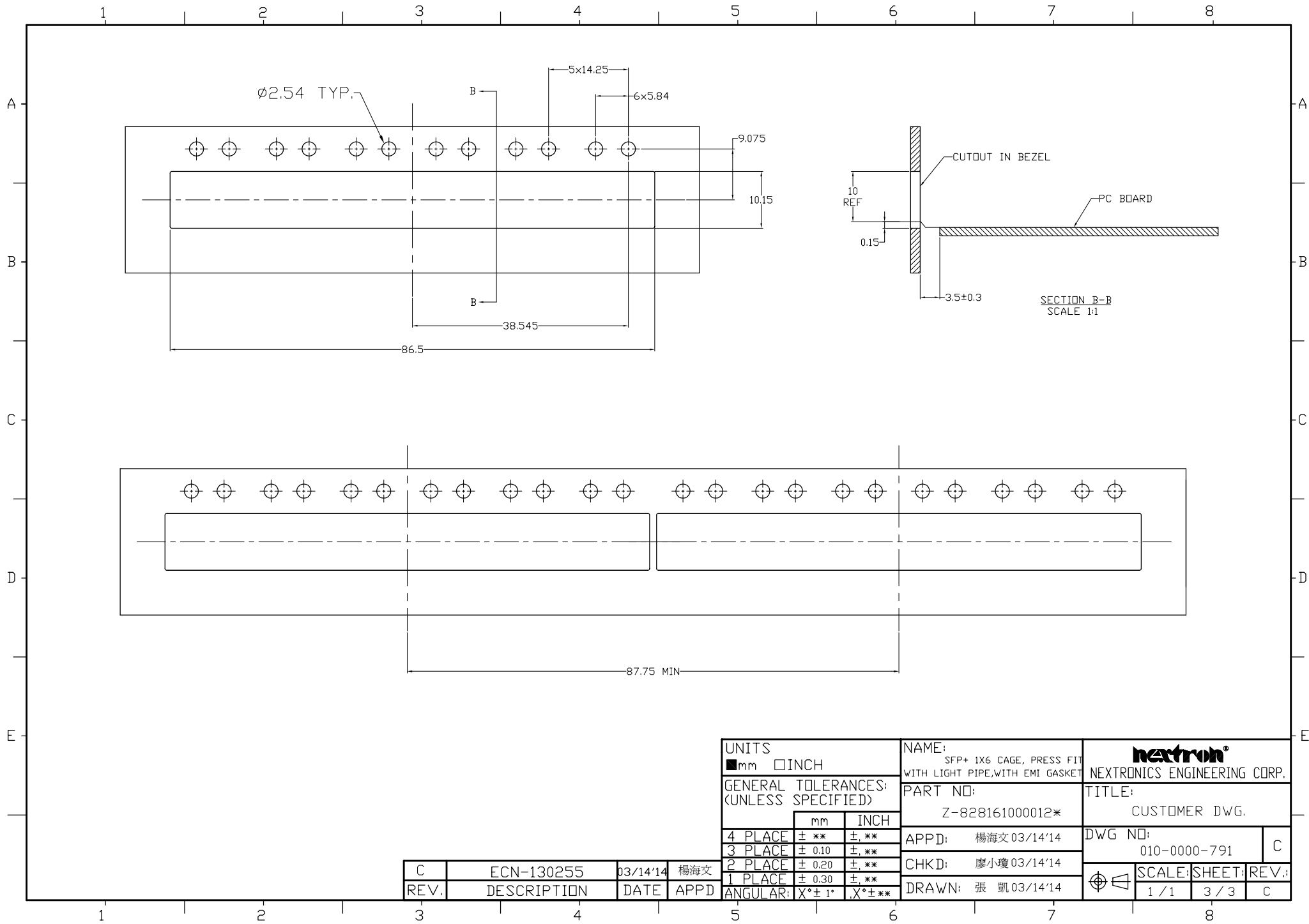
C	ECN-130255	03/14'14	楊海文
REV.	DESCRIPTION	DATE	APPD



UNITS ■ mm □ INCH		NAME: SFP+ 1X6 CAGE, PRESS FIT WITH LIGHT PIPE, WITH EMI GASKET		NEXTRONICS ENGINEERING CORP.	
GENERAL TOLERANCES: (UNLESS SPECIFIED)		PART NO: Z-828161000012*		TITLE: CUSTOMER DWG.	
		APPD: 楊海文 03/14'14		DWG NO: 010-0000-791	
		CHKD: 廖小瓊 03/14'14		SCALE: SHEET: REV.: 1 / 1 2 / 3 C	
		DRAWN: 張凱 03/14'14			
		ANGULAR: X° ± 1° X° ± **			

C	ECN-130255	03/14'14	楊海文
REV.	DESCRIPTION	DATE	APPD

DETAIL A
SCALE 2:1



UNITS <input checked="" type="checkbox"/> mm <input type="checkbox"/> INCH		NAME: SFP+ 1X6 CAGE, PRESS FIT WITH LIGHT PIPE, WITH EMI GASKET		NEXTRONICS ENGINEERING CORP.		
GENERAL TOLERANCES: (UNLESS SPECIFIED)		PART NO: Z-828161000012*				TITLE: CUSTOMER DWG.
		mm	INCH	APPD: 楊海文 03/14'14	DWG NO: 010-0000-791	C
4 PLACE	± **	± **, **		CHKD: 廖小瓊 03/14'14	SCALE: SHEET: REV.: 1 / 1 3 / 3 C	
3 PLACE	± 0.10	± **, **		DRAWN: 張凱 03/14'14		
2 PLACE	± 0.20	± **, **				
1 PLACE	± 0.30	± **, **				
ANGULAR:	X° ± 1°	X° ± **, **				

C	ECN-130255	03/14'14	楊海文
REV.	DESCRIPTION	DATE	APPD