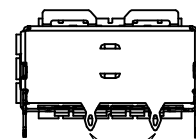
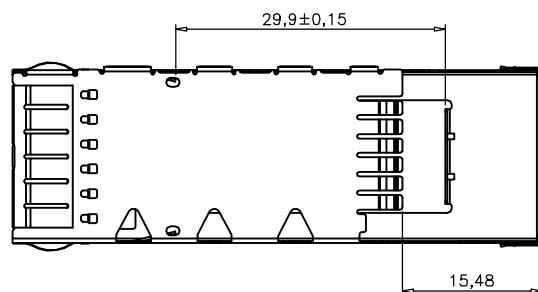
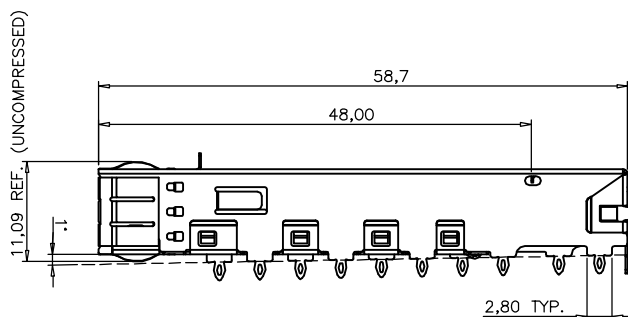
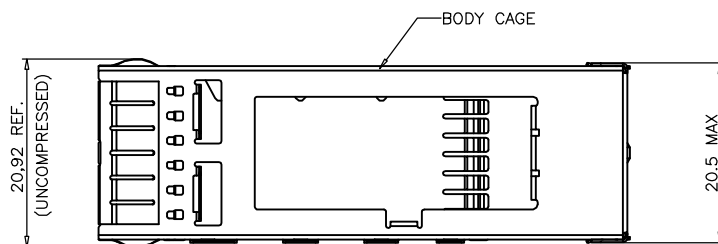
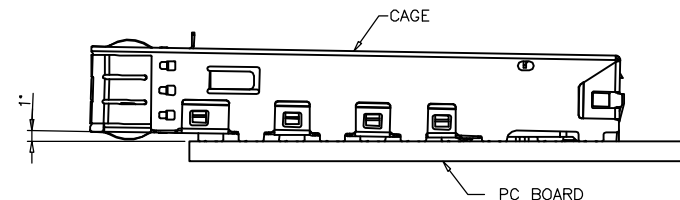


CAGE DETAILS, SPRING FINGER (1°)



REAR PINS ARE OPTIONAL

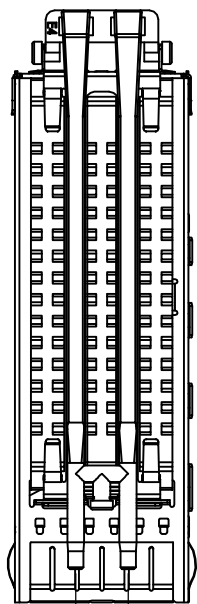


- MATERIALS:**
 BODY CAGE: STAINLESS STEEL, 0.25 THICKNESS
 EMI FINGER: STAINLESS STEEL
 HEATSINK: ALUMINUM
 HEATSINK CLIP: STAINLESS STEEL
 LIGHT PIPE MATERIAL: CLEAR POLYCARBONATE
- SURFACE FINISH:**
 EMI SPRING FINISH: CLEAR AND HOLE SEALING
 HEATSINK FINISH: CLEAR PASSIVATION
 HEATSINK CLIP FINISH: CLEAR PASSIVATION
- MATE WITH QSFP MSA COMPATIBLE TRANSCEIVER.**
- REFERENCE DOCUMENTS:**
 PRODUCT SPECIFICATION: QSFP MSA
- THIS PRODUCT COMPLY TO ROHS DIRECTIVE 2011/65/EU.**

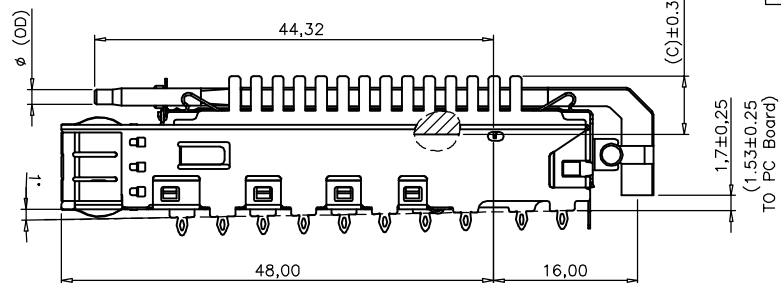
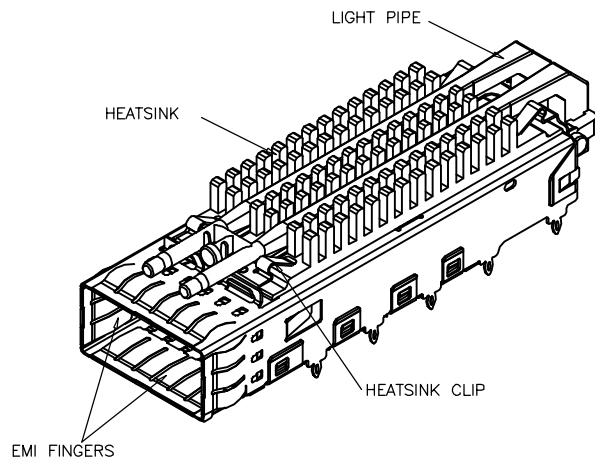
X1	New Product	04/30'14	楊海文
REV.	DESCRIPTION	DATE	APPD

UNITS ■ mm □ INCH		NAME: QSFP-ONE DEGREE (1°), CAGE ASSEMBLY		 NEXTRONICS ENGINEERING CORP.	
GENERAL TOLERANCES: (UNLESS SPECIFIED)		PART NO: Z-834T0111****1		TITLE: CUSTOMER DWG.	
	mm	INCH	APPD: 楊海文 04/30'14	DWG NO: 010-0000-C27	
4 PLACE	±**	±.**	CHKD: 廖小瓊 04/30'14	C	
3 PLACE	±0.1	±.**	DRAWN: 曾定勇 04/30'14	SCALE: SHEET: REV.:	
2 PLACE	±0.2	±.**		NA	1/8
1 PLACE	±0.3	±.**			X1
ANGULAR:	X° ±1°	X° ±**			

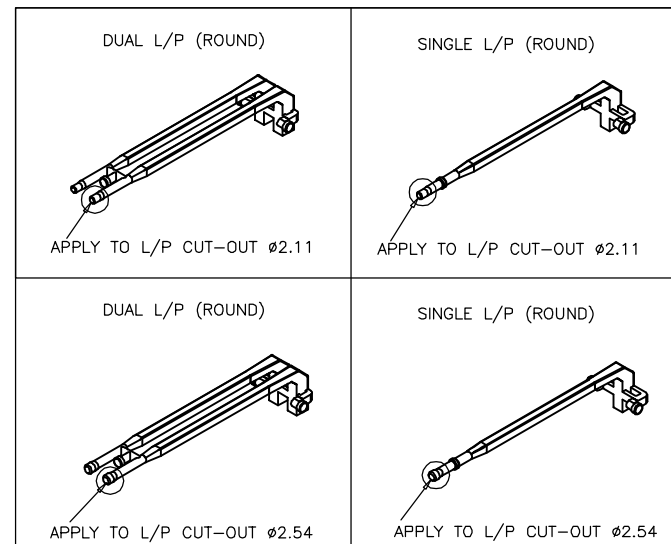
CAGE ASSEMBLY OPTIONALS, SPRING FINGER(1°)



5,80
DUAL L/P PITCH



LIGHT PIPE OPTIONALS

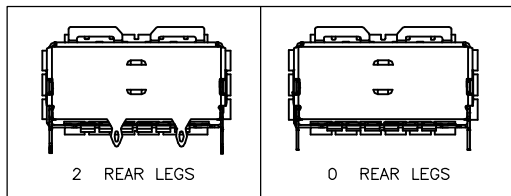


HEATSINK OPTIONALS

OVERALL HEATSINK HEIGHT	DIM "c"	REMARK
PCI	4.2	APPLICABLE
SAN	6.5	NOT APPLICABLE AT HEAE
NET	13.5	NOT APPLICABLE AT HEAE

REMARK: DIMENSION C ONLY APPLIES BEFORE MODULE INSTALLING INTO THE CAGE

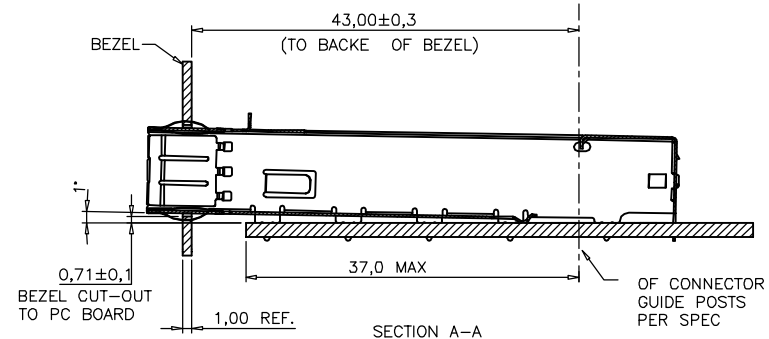
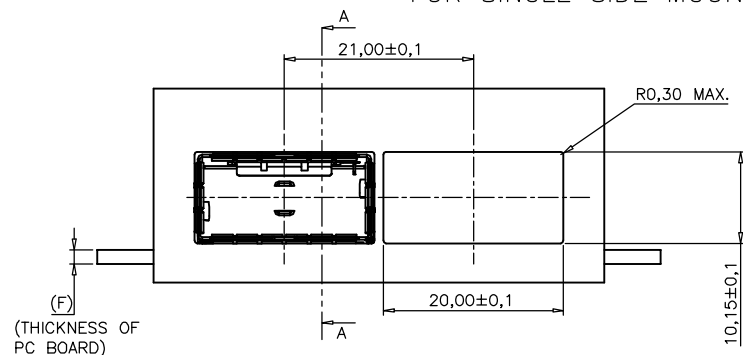
REAR LEG OPTIONALS



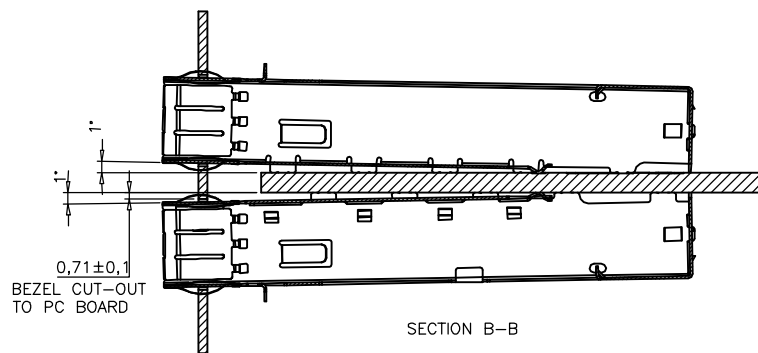
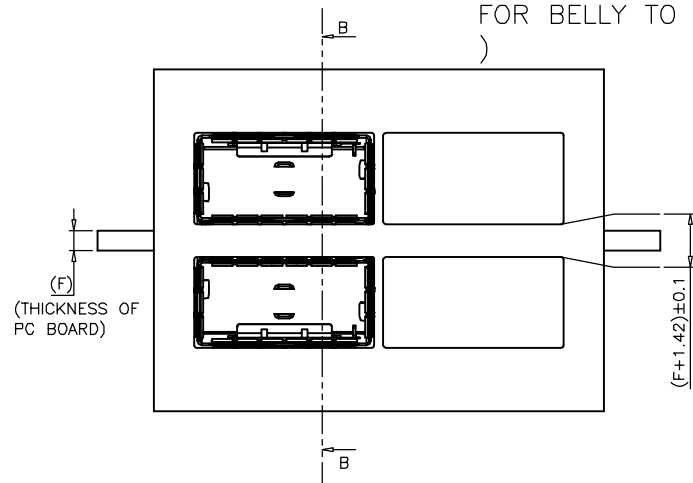
UNITS ■ mm □ INCH	NAME: QSFP-ONE DEGREE (1°), CAGE ASSEMBLY		 NEXTRONICS ENGINEERING CORP.	
	PART NO: Z-834T0111****1			
GENERAL TOLERANCES: (UNLESS SPECIFIED)		APPD: 楊海文 04/30'14	DWG NO: 010-0000-C27	
		CHKD: 廖小瓊 04/30'14	C	
		DRAWN: 曾定勇 04/30'14	SCALE: SHEET: REV.: NA 2/8 X1	
		ANGULAR: X°±1° X°±**		

X1	New Product	04/30'14	楊海文
REV.	DESCRIPTION	DATE	APPD

BEZEL AND BOARD POSITION DIMENSION
FOR SINGLE SIDE MOUNTING (SPRING FINGER 1°)



BEZEL AND BOARD POSITION DIMENSION
FOR BELLY TO BELLY MOUNTING (SPRING FINGER 1°)



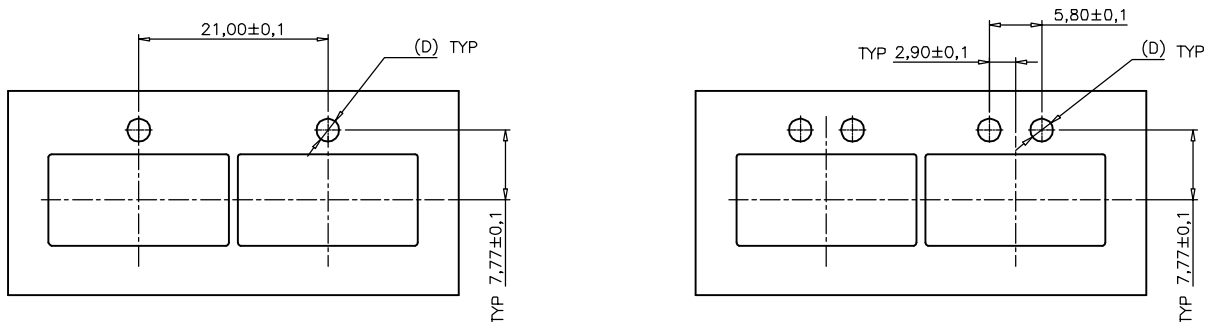
NOTES:

- THE NORMAL THICKNESS OF CUSTOMER SUPPLIED PC BOARD.(DIM. "F")
SINGLE SIDED PC BOARD THICKNESS: 1.60mm MIN.
BELLY TO BELLY PC BOARD MIN. THICKNESS: 2.2mm MIN.

UNITS ■ mm □ INCH		NAME: QSFP-ONE DEGREE (1°), CAGE ASSEMBLY	nexttron NEXTRONICS ENGINEERING CORP.	
GENERAL TOLERANCES: (UNLESS SPECIFIED)		PART NO: Z-834T0111****1	TITLE: CUSTOMER DWG.	
	mm	INCH	APPD: 楊海文 04/30'14	DWG NO: 010-0000-C27
4 PLACE	±**	±.**	CHKD: 廖小瓊 04/30'14	C
3 PLACE	±0.1	±.**	DRAWN: 曾定勇 04/30'14	SCALE: SHEET: REV.:
2 PLACE	±0.2	±.**		NA 3/8 X1
1 PLACE	±0.3	±.**		
ANGULAR:	X°±1°	X°±**		

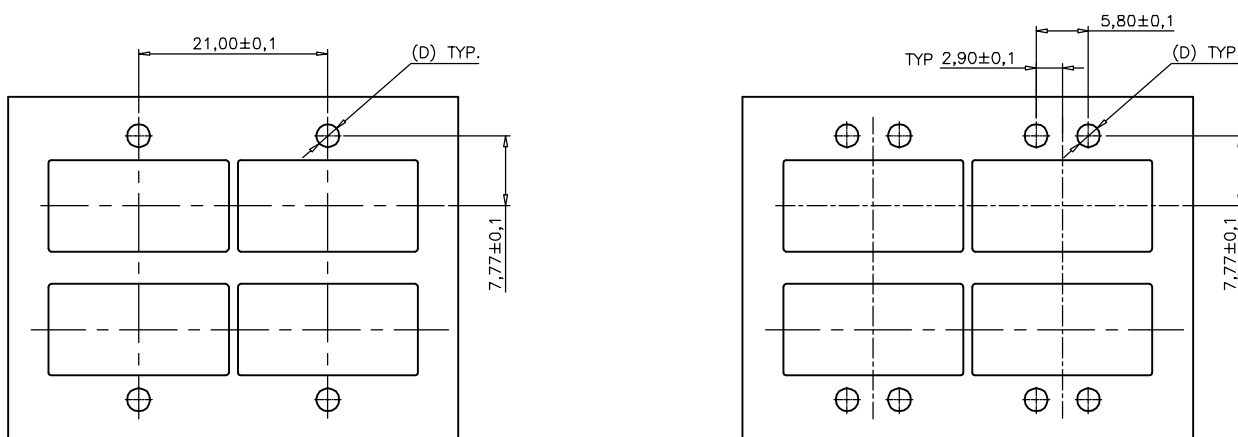
X1	New Product	04/30'14	楊海文
REV.	DESCRIPTION	DATE	APPD

BEZEL L/P CUT-OUT POSITION DIMENSION FOR SINGLE SIDE MOUNTING (SPRING FINGER 1°)



	DIM "D"
L/P CUT-OUT	2.11±0.1
OPTIONALS	2.54±0.1

BEZEL L/P CUT-OUT POSITION DIMENSION FOR BELLY TO BELLY MOUNTING (SPRING FINGER 1°)

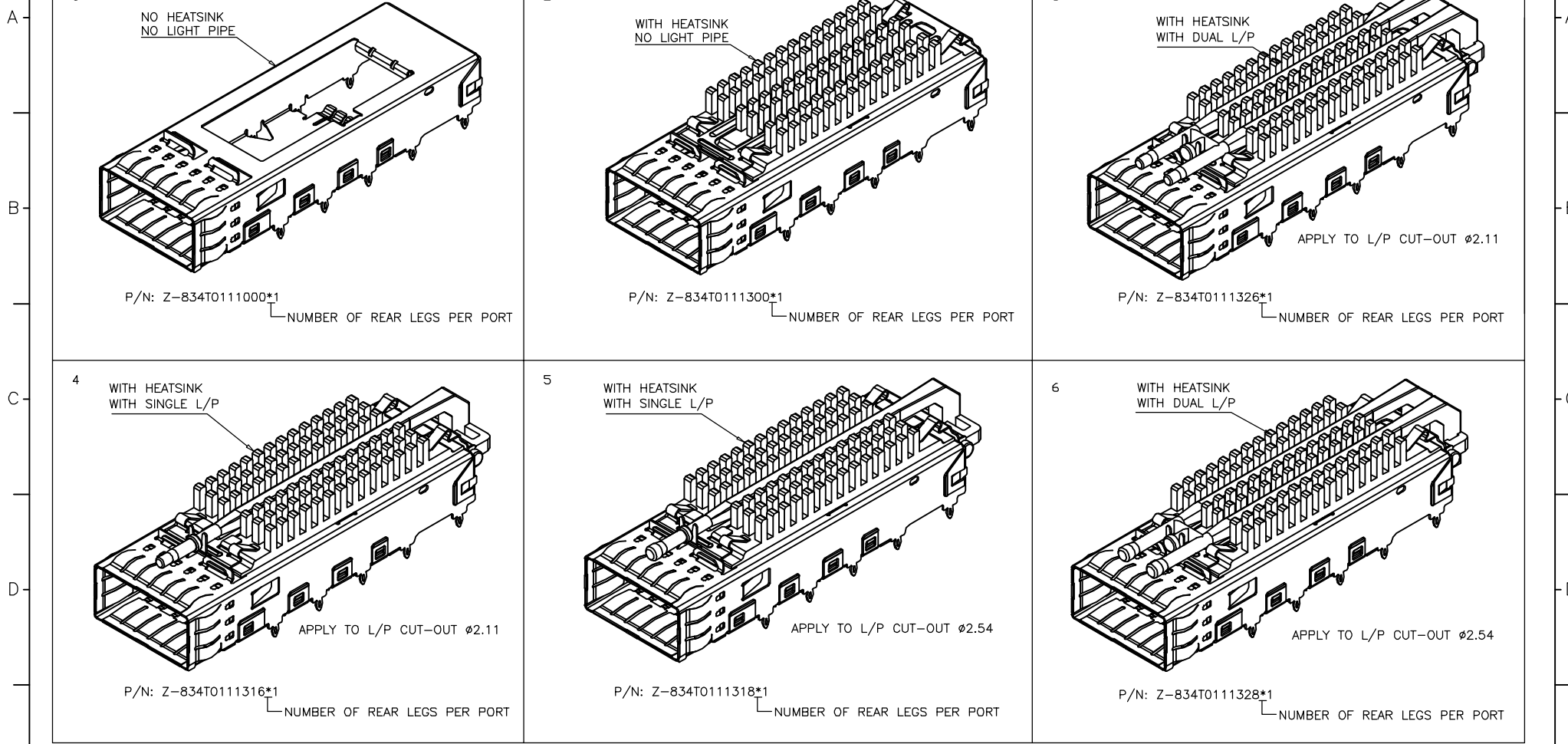


	DIM "D"
L/P CUT-OUT	2.11±0.1
OPTIONALS	2.54±0.1

UNITS ■ mm □ INCH	NAME: QSFP-ONE DEGREE (1°), CAGE ASSEMBLY		NEXTRONICS ENGINEERING CORP.	
	PART NO: Z-834T0111****1			
GENERAL TOLERANCES: (UNLESS SPECIFIED)		APPD: 楊海文 04/30'14	DWG NO: 010-0000-C27	
	mm	INCH	CHKD: 廖小瓊 04/30'14	C
4 PLACE	±**	±.**	SCALE: SHEET: REV.:	
3 PLACE	±0.1	±.**	NA	4/8
2 PLACE	±0.2	±.**	X1	
1 PLACE	±0.3	±.**		
ANGULAR:	X° ±1°	.X° ±**		
DRAWN: 曾定勇 04/30'14				

X1	New Product	04/30'14	楊海文
REV.	DESCRIPTION	DATE	APPD

TYPE OPTIONALS, SPRING FINGER (1°)



UNITS		
■ mm □ INCH		
GENERAL TOLERANCES: (UNLESS SPECIFIED)		
	mm	INCH
4 PLACE	±**	±.**
3 PLACE	±0.2	±.**
2 PLACE	±0.1	±.**
1 PLACE	±0.3	±.**
ANGULAR:	X°±1°	X°±**

NAME: QSFP-ONE DEGREE (1°), CAGE ASSEMBLY
PART NO: Z-834T0111****1
APPD: 楊海文 04/30'14
CHKD: 廖小瓊 04/30'14
DRAWN: 曾定勇 04/30'14

nexttron NEXTRONICS ENGINEERING CORP.		
TITLE: CUSTOMER DWG.		
DWG NO: 010-0000-C27	C	
SCALE: NA	SHEET: 5/8	REV.: X1

X1	New Product	04/30'14	楊海文
REV.	DESCRIPTION	DATE	APPD

PART NUMBER OPTIONALS

Z - 8 34 T 0 11 1 X X X X 1

PRODUCT TYPE

- B= Behind Bezel
- T= Thru Bezel (Spring finger)
- E= EMI Gasket (Elastomer Gasket)

CAGE TYPE

- 11 = QSFP CAGE 1X1
- 12 = QSFP CAGE 1X2
- 13 = QSFP CAGE 1X3
- 14 = QSFP CAGE 1X4
- 16 = QSFP CAGE 1X6

HEATSINK

- 0= NO HEATSINK
- 1= NET (HEATSINK 13.5MM TALL) => NOT APPLICABLE AT HEAE
- 2= SAN (HEATSINK 6.5MM TALL) => NOT APPLICABLE AT HEAE
- 3= PCI (HEATSINK 4.2MM TALL)

LIGHT PIPE

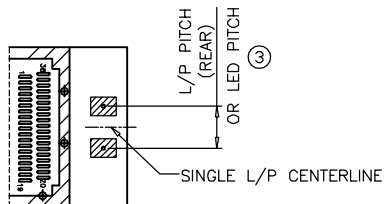
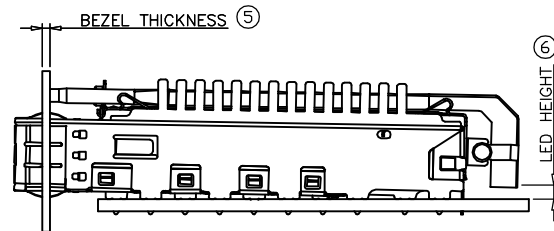
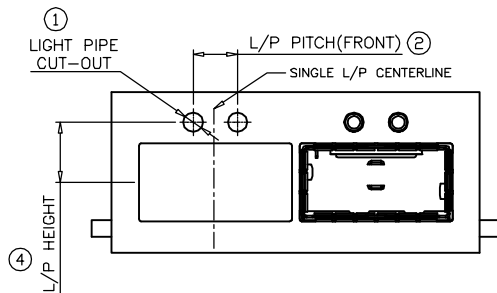
- 0= NO LIGHT PIPE
- 1= SINGLE LIGHT PIPE (ROUND)
- 2= DUAL LIGHT PIPE (ROUND)

NUMBER OF REAR LEGS PER PORT

- 0= 2 LEGS (DEFAULT)
- N= 0 LEG (NO LEG)

MATING BEZEL

THE DIMENSION FOR MATING BEZEL (UNIT: MM)								
CODE	L/P APPEARANCE	L/P CUT-OUT	L/P PITCH (FRONT)	L/P PITCH (REAR)	L/P HEIGHT	BEZEL THICKNESS	LED HEIGHT	REMARK
0	NO L/P							NO LIGHT PIPE
6	ROUND	∅2.11	5.80	5.80	7.86	1.0~1.6	0.8~1.1	APPLICABLE
7	ROUND	∅2.67	5.80	5.80	7.75	1.0~1.6	0.8~1.1	NOT APPLICABLE AT HEAE
8	ROUND	∅2.54	5.80	5.80	7.86	1.0~1.6	0.8~1.1	APPLICABLE
		①	②	③	④	⑤	⑥	



UNITS ■ mm □ INCH	NAME: QSFP-ONE DEGREE (1'), CAGE ASSEMBLY		NEXTRON [®] NEXTRONICS ENGINEERING CORP.	
	PART NO: Z-834T0111****1		TITLE: CUSTOMER DWG.	
GENERAL TOLERANCES: (UNLESS SPECIFIED)	APPD: 楊海文 04/30'14		DWG NO: 010-0000-C27	
	CHKD: 廖小瓊 04/30'14		C	
	DRAWN: 曾定勇 04/30'14		SCALE: SHEET: REV.: NA 6/8 X1	
4 PLACE ±** ±.**	3 PLACE ±0.1 ±.**	2 PLACE ±0.2 ±.**	1 PLACE ±0.3 ±.**	ANGULAR: X°±1' X°±**

X1	New Product	04/30'14	楊海文
REV.	DESCRIPTION	DATE	APPD

